

Anti-PsaB subunit of photosystem I antibody

Catalog: PHY0054A

Product Information

Description:	Rabbit polyclonal antibody
Background:	The core of the photosystem I reaction center is formed by polypeptides PSI-A and PSI-B, the products of the homologous PsaA and PsaB genes. PsaB is a core protein of PSI complex.
Synonyms:	PsaB, Photosystem I P700 chlorophyll a apoprotein A2, PSI-B
Immunogen:	KLH-conjugated synthetic peptide (16 aa from C terminal section) derived from <i>Arabidopsis thaliana</i> PsaB (ATCG00340).
Form:	Lyophilized
Quantity:	150 µg
Purification:	Immunogen affinity purified
Reconstitution:	Reconstitution with 150 µl of 0.01M sterile PBS. "Note: please spin tube briefly prior to opening it to avoid any losses that might occur from lyophilized material adhering to the cap or sides of the tube".
Stability & Storage:	Use a manual defrost freezer and avoid repeated freeze-thaw cycles. 12 months from date of receipt, -20 to -70°C as supplied. 6 months, -20 to -70°C under sterile conditions after reconstitution. 1 month, 2 to 8°C under sterile conditions after reconstitution.
Shipping:	The product is shipped at 4°C. Upon receipt, store it immediately at the temperature recommended above.

Application Information

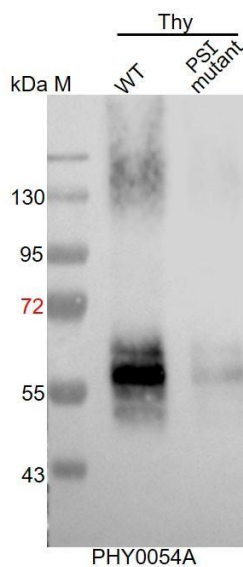
Recommended Dilution:	Western Blot (1:1000-1:4000) Note: Optimal dilutions/concentrations should be determined by the end user.
Expected / apparent MW:	82 kDa
Confirmed Reactivity:	<i>Arabidopsis thaliana</i>
Predicted Reactivity:	Among species analyzed, the sequence of the synthetic peptide used for immunization is 100% homologues with the sequence in <i>Brassica rapa</i> , <i>Medicago truncatula</i> , <i>Solanum tuberosum</i> , <i>Chlamydomonas reinhardtii</i> , <i>Oryza sativa</i> , <i>Zea mays</i> , <i>Brassica napus</i> , <i>Populus</i>

Research Use Only

trichocarpa, *Sorghum bicolor*, *Vitis vinifera*, *Triticum aestivum*, *Setaria viridis*, *Spinacia oleracea*, *Glycine max*, *Hordeum vulgare*, *Panicum virgatum*, *Solanum lycopersicum*, *Nicotiana tabacum*, *Cucumis sativus*, *Gossypium raimondii*, *Synechocystis sp. PCC 6803*, and 80-99% homologues with the sequence in *Physcomitrella patens*.

For more species homologues information, please contact tech support at tech@phytoab.com.

Application Example



Thy-WT: thylakoid membrane protein from WT of *Arabidopsis thaliana* containing 0.5 μ g of chlorophyll.

Thy-PS I mutant: thylakoid membrane protein from an *Arabidopsis* mutant with low accumulation of PSI containing 0.5 μ g of chlorophyll.

Electrophoresis: 12% SDS- PAGE

Transfer: blotting to NC (nitrocellulose) membrane for 1 h.

Blocking: 5% skim milk at RT or 4°C for 1 h.

← **Primary antibody:** 1:4000 dilution overnight at 4°C.

Secondary antibody: 1:20000 dilution using Goat Anti-Rabbit IgG H&L (HRP) (Cat# PHY6000)

Detection: using chemiluminescence substrate and image were captured with CCD camera.