

Anti-CP43 subunit of Photosystem II, E-loop antibody

Catalog: PHY0318

Product Information

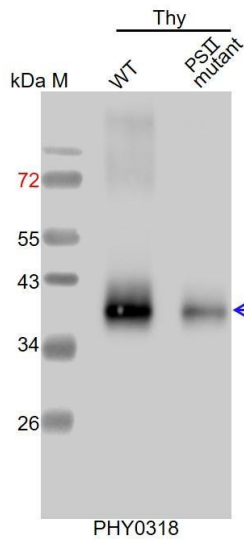
Description:	Rabbit polyclonal antibody
Background:	CP43 is a component of the proximal antenna of PSII and contains six transmembrane alpha helices and five hydrophilic loops that connect the membrane-spanning domains. CP43 is encoded by the <i>psbC</i> gene (ATCG00280).
Synonyms:	PsbC
Immunogen:	Recombinant CP43 E-loop of <i>Arabidopsis thaliana</i> ATCG00280.
Form:	Lyophilized
Quantity:	150 µg
Purification:	Protein A purified
Reconstitution:	Reconstitution with 150 µl of 0.01 M sterile PBS. "Note: please spin tube briefly prior to opening it to avoid any losses that might occur from lyophilized material adhering to the cap or sides of the tube".
Stability & Storage:	Use a manual defrost freezer and avoid repeated freeze-thaw cycles. 12 months from date of receipt, -20 to -70°C as supplied. 6 months, -20 to -70°C under sterile conditions after reconstitution. 1 month, 2 to 8°C under sterile conditions after reconstitution.
Shipping:	The product is shipped at 4°C. Upon receipt, store it immediately at the temperature recommended above.

Application Information

Recommended Dilution:	Western Blot (1:1000-1:4000) Note: Optimal dilutions/concentrations should be determined by the end user.
Expected / apparent MW:	52 kDa(<i>Arabidopsis thaliana</i>), 38 kDa(<i>Synechocystis</i> sp. PCC 6803)
Confirmed Reactivity:	<i>Arabidopsis thaliana</i> , <i>Synechocystis</i> sp. PCC 6803
Predicted Reactivity:	For more species homologues information, please contact tech support at tech@phytoab.com .

Research Use Only

Application Example



Thy-WT: thylakoid membrane protein from WT of *Arabidopsis thaliana* containing 0.25 µg of chlorophyll.

Thy-PS II mutant: thylakoid membrane protein from an Arabidopsis mutant with low accumulation of PS II containing 0.25 µg of chlorophyll.

Electrophoresis: 15% SDS- PAGE

Transfer: blotting to NC (nitrocellulose) membrane for 1 h.

Blocking: 5% skim milk at RT or 4°C for 1 h.

Primary antibody: 1:4000 dilution overnight at 4°C.

Secondary antibody: 1:10000 dilution using Goat Anti-Rabbit IgG

H&L (HRP) (Cat# PHY6000)

Detection: using chemiluminescence substrate and image were captured with CCD camera.