

Anti-CFolll subunits of chloroplast ATP synthase antibody

Catalog: PHY0114A

Product Information

Description:	Rabbit polyclonal antibody
Background:	The CFolll subunits of chloroplast ATP synthase (AtpH) is an 8 kD integral membrane protein with two transmembrane domains.
Synonyms:	AtpH, ATP synthase F(0) sector subunit c, Lipid-binding protein Dicyclohexylcarbodiimide-binding protein, F-type ATPase subunit c, F-ATPase subunit c
Immunogen:	KLH-conjugated synthetic peptide (15 aa from N terminal section) derived from <i>Arabidopsis thaliana</i> AtpH (ATCG00140).
Form:	Lyophilized
Quantity:	150 µg
Purification:	Immunogen affinity purified
Reconstitution:	Reconstitution with 150 µl of 0.01 M sterile PBS. "Note: please spin tube briefly prior to opening it to avoid any losses that might occur from lyophilized material adhering to the cap or sides of the tube".
Stability & Storage:	Use a manual defrost freezer and avoid repeated freeze-thaw cycles. 12 months from date of receipt, -20 to -70°C as supplied. 6 months, -20 to -70°C under sterile conditions after reconstitution. 1 month, 2 to 8°C under sterile conditions after reconstitution.
Shipping:	The product is shipped at 4°C. Upon receipt, store it immediately at the temperature recommended above.

Application Information

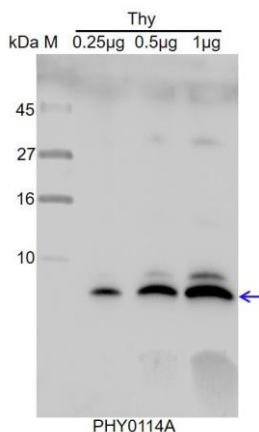
Recommended Dilution:	Western Blot (1:1000-1:2000) Note: Optimal dilutions/concentrations should be determined by the end user.
Expected / apparent MW:	8 kDa
Confirmed Reactivity:	<i>Arabidopsis thaliana</i>
Predicted Reactivity:	Among species analyzed, the sequence of the synthetic peptide used

Research Use Only

for immunization is 100% homologues with the sequence in *Zea mays*, *Medicago truncatula*, *Brassica rapa*, *Brassica napus*, *Triticum aestivum*, *Hordeum vulgare*, *Gossypium raimondii*, *Panicum virgatum*, *Nicotiana tabacum*, *Glycine max*, *Populus trichocarpa*, *Oryza sativa*, *Spinacia oleracea*, and 80-99% homologues with the sequence in *Solanum tuberosum*, *Vitis vinifera*, *Physcomitrella patens*, *Sorghum bicolor*.

For more species homologues information, please contact tech support at tech@phytoab.com.

Application Example



Thy: thylakoid membrane protein from *Arabidopsis thaliana* leaf containing 0.25 µg, 0.5 µg, and 1 µg of chlorophyll, respectively.

Electrophoresis: Tricine-SDS-PAGE

Transfer: blotting to NC (nitrocellulose) membrane for 1 h.

Blocking: 5% skim milk at RT or 4°C for 1 h.

Primary antibody: 1:1000 dilution overnight at 4°C.

Secondary antibody: 1:20000 dilution using Goat Anti-Rabbit IgG H&L (HRP) (Cat# PHY6000).

Detection: using chemiluminescence substrate and image were captured with CCD camera.