

# Anti-D1 subunit of Photosystem II, N-terminal antibody

Catalog: PHY0057

## Product Information

<b>Description:</b>	Rabbit polyclonal antibody
<b>Background:</b>	The D1 protein of Photosystem II (PSII), encoded by the <i>PsbA</i> genes, is an indispensable component of oxygenic photosynthesis. Due to strongly oxidative chemistry of PSII water splitting, the D1 protein is prone to constant photodamage requiring its replacement, whereas most of the other PSII subunits remain ordinarily undamaged.
<b>Synonyms:</b>	PsbA, 32 kDa thylakoid membrane protein, photosystem II protein D1
<b>Immunogen:</b>	KLH-conjugated synthetic peptide (15 aa from N terminal section) derived from <i>Arabidopsis thaliana</i> D1 (ATCG00020).
<b>Form:</b>	Lyophilized
<b>Quantity:</b>	150 µg
<b>Purification:</b>	Protein A purified
<b>Reconstitution:</b>	Reconstitution with 150 µl of 0.01 M sterile PBS. "Note: please spin tube briefly prior to opening it to avoid any losses that might occur from lyophilized material adhering to the cap or sides of the tube".
<b>Stability &amp; Storage:</b>	Use a manual defrost freezer and avoid repeated freeze-thaw cycles. 12 months from date of receipt, -20 to -70°C as supplied. 6 months, -20 to -70°C under sterile conditions after reconstitution. 1 month, 2 to 8°C under sterile conditions after reconstitution.
<b>Shipping:</b>	The product is shipped at 4°C. Upon receipt, store it immediately at the temperature recommended above.

## Application Information

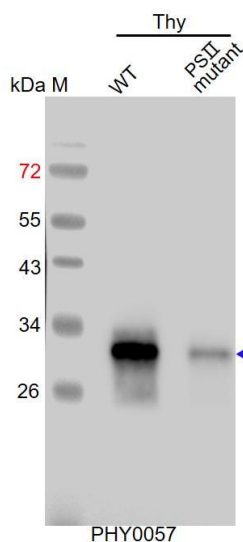
<b>Recommended Dilution:</b>	Western Blot (1:1000-1:2000) Note: Optimal dilutions/concentrations should be determined by the end user.
<b>Expected / apparent MW:</b>	39 kDa
<b>Confirmed Reactivity:</b>	<i>Arabidopsis thaliana</i>
<b>Predicted Reactivity:</b>	Among species analyzed, the sequence of the synthetic peptide used

Research Use Only

for immunization is 100% homologues with the sequence in *Glycine max*, *Nicotiana tabacum*, *Solanum tuberosum*, *Brassica napus*, *Populus trichocarpa*, *Cucumis sativus*, *Spinacia oleracea*, *Brassica rapa*, and 80-99% homologues with the sequence in *Vitis vinifera*, *Gossypium raimondii*, *Medicago truncatula*, *Triticum aestivum*, *Hordeum vulgare*, *Zea mays*, *Oryza sativa*, *Panicum virgatum*, *Physcomitrium patens*, *Chlamydomonas reinhardtii*.

For more species homologues information, please contact tech support at [tech@phytoab.com](mailto:tech@phytoab.com).

## Application Example



Thy-WT: thylakoid membrane protein from WT of *Arabidopsis thaliana* containing 0.25 µg of chlorophyll.

Thy-PS II mutant: thylakoid membrane protein from an *Arabidopsis* mutant with low accumulation of PS II containing 0.25 µg of chlorophyll.

**Electrophoresis:** 15% SDS- PAGE

**Transfer:** blotting to NC (nitrocellulose) membrane for 1 h.

**Blocking:** 5% skim milk at RT or 4°C for 1 h.

**Primary antibody:** 1:4000 dilution overnight at 4°C.

**Secondary antibody:** 1:20000 dilution using Goat Anti-Rabbit IgG H&L (HRP) (Cat# PHY6000)

**Detection:** using chemiluminescence substrate and image were captured with CCD camera.