

Anti-ApcB antibody

Catalog: PHY5106S

Product Information

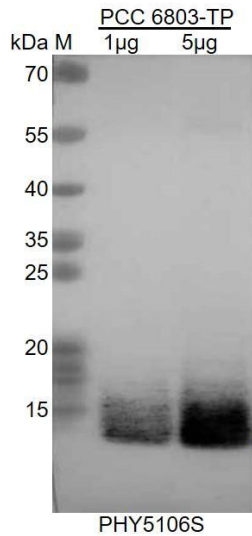
Description:	Rabbit polyclonal antibody
Background:	Allophycocyanin beta subunit, encoded by the <i>ApcB</i> (<i>slr1986</i>) in <i>Synechocystis</i> sp. PCC 6803.
Synonyms:	ApcB
Immunogen:	Recombinant protein of ApcB (13-161aa) derived from <i>Synechocystis</i> sp. PCC 6803 (<i>slr1986</i>).
Form:	Lyophilized
Quantity:	150 µg
Purification:	Serum
Reconstitution:	Reconstitution with 150 µl of sterile water. "Note: please spin tube briefly prior to opening it to avoid any losses that might occur from lyophilized material adhering to the cap or sides of the tube".
Stability & Storage:	Use a manual defrost freezer and avoid repeated freeze-thaw cycles. 12 months from date of receipt, -20 to -70°C as supplied. 6 months, -20 to -70°C under sterile conditions after reconstitution. 1 month, 2 to 8°C under sterile conditions after reconstitution.
Shipping:	The product is shipped at 4°C. Upon receipt, store it immediately at the temperature recommended above.

Application Information

Recommended Dilution:	Western Blot (1:1000-1:2000) Note: Optimal dilutions/concentrations should be determined by the end user.
Expected / apparent MW:	17.9 / 14 kDa
Confirmed Reactivity:	<i>Synechocystis</i> sp. PCC 6803
Predicted Reactivity:	For more species homologues information, please contact tech support at tech@phytoab.com .

Research Use Only

Application Example



PCC 6803-TP is total protein from *Synechocystis sp.* PCC 6803 cells containing 1 µg and 5 µg of protein, respectively.

Electrophoresis: 15% SDS-Urea-PAGE.

Transfer: blotting to NC (nitrocellulose) membrane for 1h.

Blocking: 5% skim milk at RT for 1h.

Primary antibody: 1:1000 dilution overnight at 4°C.

Secondary antibody: 1:10000 dilution using Goat Anti-Rabbit IgG H&L (Cat# PHY6000).

Detection: using chemiluminescence substrate and image were captured with CCD camera.