

# Anti-PsaD subunit of photosystem I antibody

Catalog: PHY0343

## Product Information

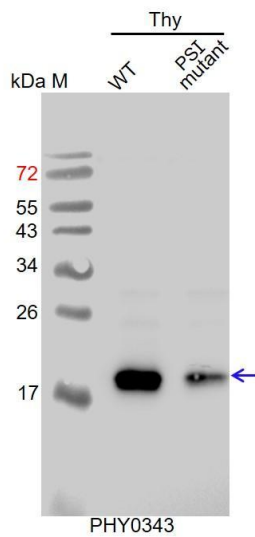
<b>Description:</b>	Rabbit polyclonal antibody
<b>Background:</b>	Photosystem I (PSI) consists of at least eleven subunits in the thylakoid membrane, and mediates photosynthetic electron transfer from plastocyanin to ferredoxin. PsaD subunit, which is located at the stromal surface of the PSI, is thought to be the docking site of ferredoxin, and encoded by the nuclear gene <i>PsaD-1</i> (AT4G02770) and <i>PsaD-2</i> (AT1G03130).
<b>Synonyms:</b>	PsaD, PSI-D
<b>Immunogen:</b>	Recombinant protein of PsaD-1 (1-208 aa) derived from of <i>Arabidopsis thaliana</i> AT4G02770.
<b>Form:</b>	Lyophilized
<b>Quantity:</b>	150 µg
<b>Purification:</b>	Protein A purified
<b>Reconstitution:</b>	Reconstitution with 150 µl of 0.01 M sterile PBS. "Note: please spin tube briefly prior to opening it to avoid any losses that might occur from lyophilized material adhering to the cap or sides of the tube".
<b>Stability</b>	Use a manual defrost freezer and avoid repeated freeze-thaw cycles.
<b>&amp;Storage:</b>	12 months from date of receipt, -20 to -70°C as supplied. 6 months, -20 to -70°C under sterile conditions after reconstitution. 1 month, 2 to 8°C under sterile conditions after reconstitution.
<b>Shipping:</b>	The product is shipped at 4°C. Upon receipt, store it immediately at the temperature recommended above.

## Application Information

<b>Recommended Dilution:</b>	Western Blot (1:1000-1:5000) Note: Optimal dilutions/concentrations should be determined by the end user.
<b>Expected / apparent MW:</b>	23 / 18 kDa
<b>Confirmed Reactivity:</b>	<i>Arabidopsis thaliana</i>
<b>Predicted Reactivity:</b>	For more species homologues information, please contact tech support at <a href="mailto:tech@phytoab.com">tech@phytoab.com</a> .

Research Use Only

## Application Example



**Thy-WT:** thylakoid membrane protein from WT of *Arabidopsis thaliana* containing 0.25  $\mu$ g of chlorophyll.

**Thy-PS I mutant:** thylakoid membrane protein from an *Arabidopsis* mutant with low accumulation of PS I containing 0.25  $\mu$ g of chlorophyll.

**Electrophoresis:** 15% SDS-PAGE

**Transfer:** blotting to NC (nitrocellulose) membrane for 1 h.

**Blocking:** 5% skim milk at RT or 4°C for 1 h.

**Primary antibody:** 1:5000 dilution overnight at 4°C.

**Secondary antibody:** 1:10000 dilution using Goat Anti-Rabbit IgG

H&L (HRP) (Cat# PHY6000)

**Detection:** using chemiluminescence substrate and image were captured with CCD camera.