

Anti-Subunit IV of Cyt b6/f complex antibody

Catalog: PHY0354A

Product Information

Description:	Rabbit polyclonal antibody
Background:	Cytochrome b6-f complex subunit 4 is component of the cytochrome b6-f complex, which mediates electron transfer between photosystem II (PSII) and photosystem I (PSI), cyclic electron flow around PSI, and state transitions.
Synonyms:	PetD, PETD, PHOTOSYNTHETIC ELECTRON TRANSFER D
Immunogen:	KLH-conjugated synthetic peptide (15 aa from N terminal section) derived from <i>Arabidopsis thaliana</i> PetD (ATCG00730).
Form:	Lyophilized
Quantity:	150 µg
Purification:	Immunogen affinity purified
Reconstitution:	Reconstitution with 150 µl of 0.01 M sterile PBS. "Note: please spin tube briefly prior to opening it to avoid any losses that might occur from lyophilized material adhering to the cap or sides of the tube".
Stability & Storage:	Use a manual defrost freezer and avoid repeated freeze-thaw cycles. 12 months from date of receipt, -20 to -70°C as supplied. 6 months, -20 to -70°C under sterile conditions after reconstitution. 1 month, 2 to 8°C under sterile conditions after reconstitution.
Shipping:	The product is shipped at 4°C. Upon receipt, store it immediately at the temperature recommended above.

Application Information

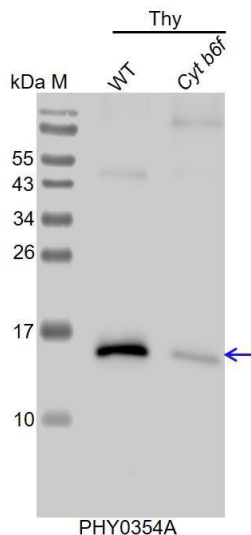
Recommended Dilution:	Western Blot (1:1000-1:2000) Note: Optimal dilutions/concentrations should be determined by the end user.
Expected / apparent MW:	17 / 16 kDa
Confirmed Reactivity:	<i>Arabidopsis thaliana</i>
Predicted Reactivity:	Among analyzed species, the sequence of the synthetic peptide used for immunization is 100% homologues with the sequence in <i>Zea mays</i> , <i>Brassica rapa</i> , <i>Panicum virgatum</i> , <i>Leymus chinensis</i> , <i>Setaria viridis</i> , <i>Oryza sativa</i> , <i>Solanum lycopersicum</i> , <i>Sorghum bicolor</i> ,

Research Use Only

Medicago truncatula, *Triticum aestivum*, *Cucumis sativus*, *Hordeum vulgare* subsp. *vulgare*, *Brassica napus*, *Populus trichocarpa*, *Synechococcus elongatus* PCC 7942, *Glycine max*, *Synechocystis* sp. PCC 6803, *Nicotiana tabacum*, *Spinacia oleracea*, *Solanum tuberosum*, *Setaria viridis*, *Physcomitrium patens*, *Gossypium raimondii*, and 80-99% homologues with the sequence in *Chlamydomonas reinhardtii*.

For more species homologues information, please contact tech support at tech@phytoab.com.

Application Example



Thy-WT: thylakoid membrane protein from *Arabidopsis thaliana* containing 0.5 µg of chlorophyll.

Thy-Cyt *b6f*: thylakoid membrane protein from *Arabidopsis* mutant with low accumulation of Cyt *b6f* complex containing 0.5 µg of chlorophyll.

Electrophoresis: 15% SDS-PAGE

Transfer: blotting to NC (nitrocellulose) membrane for 1 h.

Blocking: 5% skim milk at RT or 4°C for 1 h.

Primary antibody: 1:2000 dilution overnight at 4°C.

Secondary antibody: 1:10000 dilution using Goat Anti-Rabbit IgG H&L(HRP) (Cat# PHY6000).

Detection: using chemiluminescence substrate and image were captured with CCD camera.