

Anti-PsbL subunit of Photosystem II antibody

Catalog: PHY0478A

Product Information

Description:	Rabbit polyclonal antibody
Background:	PsbL is a subunit of Photosystem II. This subunit has a molecular mass of 4.5 kDa and localized at the monomer-monomer interface of Photosystem II. PsbL consists of a single membrane-spanning domain and seems to be required for normal functioning at the QA site.
Synonyms:	PsbL, PHOTOSYSTEM II REACTION CENTER PROTEIN L
Immunogen:	KLH-conjugated synthetic peptide (14 aa from N terminal section) derived from <i>Arabidopsis thaliana</i> PsbL (ATCG00560).
Form:	Lyophilized
Quantity:	150 µg
Purification:	Immunogen affinity purified
Reconstitution:	Reconstitution with 150 µl of 0.01 M sterile PBS. "Note: please spin tube briefly prior to opening it to avoid any losses that might occur from lyophilized material adhering to the cap or sides of the tube".
Stability	Use a manual defrost freezer and avoid repeated freeze-thaw cycles.
&Storage:	12 months from date of receipt, -20 to -70°C as supplied. 6 months, -20 to -70°C under sterile conditions after reconstitution. 1 month, 2 to 8°C under sterile conditions after reconstitution.
Shipping:	The product is shipped at 4°C. Upon receipt, store it immediately at the temperature recommended above.

Application Information

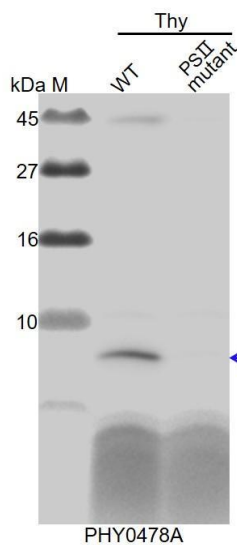
Recommended Dilution:	Western Blot (1:1000-1:2000) Note: Optimal dilutions/concentrations should be determined by the end user.
Expected / apparent MW:	4 kDa
Confirmed Reactivity:	<i>Arabidopsis thaliana</i>
Predicted Reactivity:	Among species analyzed, the sequence of the synthetic peptide used for immunization is 80-99% homologues with the sequence in <i>Oryza</i>

Research Use Only

sativa Japonica Group, Triticum aestivum, Solanum lycopersicum, Solanum tuberosum, Brassica napus, Vitis vinifera, Glycine max, Sorghum bicolor, Medicago truncatula, Physcomitrella patens, Gossypium raimondii, Synechocystis sp. PCC 6803.

For more species homologues information, please contact tech support at tech@phytoab.com.

Application Example



Thy-WT: thylakoid membrane protein from WT of *Arabidopsis thaliana* containing 2.5 µg of chlorophyll.

Thy-PS II : thylakoid membrane protein from an *Arabidopsis* mutant with low accumulation of PSI containing 2.5 µg of chlorophyll.

Electrophoresis: Tricine-SDS-PAGE

Transfer: blotting to NC (nitrocellulose) membrane for 1 h.

Blocking: 5% skim milk at RT or 4°C for 1 h.

← **Primary antibody:** 1:1000 dilution overnight at 4°C.

Secondary antibody: 1:10000 dilution using Goat Anti-Rabbit IgG

H&L(HRP) (Cat# PHY6000).

Detection: using chemiluminescence substrate and image were captured with CCD camera.