

# Anti-Heat shock protein 90 antibody

Catalog: PHY0503

## Product Information

<b>Description:</b>	Mouse monoclonal antibody
<b>Background:</b>	Hsp90 (heat shock protein 90) is a chaperone protein that assists other proteins to fold properly, stabilizes proteins against heat stress, and aids in protein degradation.
<b>Synonyms:</b>	HSP90, HSP81-2, Heat shock protein 90
<b>Immunogen:</b>	Recombinant protein HSP90 derived from <i>Oryza sativa</i> (Os09g0482100), which shows more than 90% identity with <i>Arabidopsis thaliana</i> HSP90 proteins (AT5G56030, AT5G56010, AT5G56000, AT5G52640).
<b>Form:</b>	Lyophilized
<b>Quantity:</b>	150 µg
<b>Purification:</b>	Protein A purified
<b>Reconstitution:</b>	Reconstitution with 150 µl of 0.01 M sterile PBS. "Note: please spin tube briefly prior to opening it to avoid any losses that might occur from lyophilized material adhering to the cap or sides of the tube".
<b>Stability &amp; Storage:</b>	Use a manual defrost freezer and avoid repeated freeze-thaw cycles. 12 months from date of receipt, -20 to -70°C as supplied. 6 months, -20 to -70°C under sterile conditions after reconstitution. 1 month, 2 to 8°C under sterile conditions after reconstitution.
<b>Shipping:</b>	The product is shipped at 4°C. Upon receipt, store it immediately at the temperature recommended above.

## Application Information

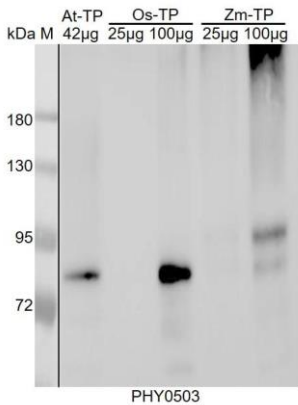
<b>Recommended Dilution:</b>	Western Blot (1:1000-1:2500) Note: Optimal dilutions/concentrations should be determined by the end user.
<b>Expected / apparent MW:</b>	81 kDa
<b>Confirmed Reactivity:</b>	<i>Arabidopsis thaliana</i> , <i>Oryza sativa</i> , <i>Zea mays</i>

Research Use Only

### Predicted Reactivity:

For more species homologues information, please contact tech support at [tech@phytoab.com](mailto:tech@phytoab.com).

## Application Example



At-TP: 42 µg total protein from *Arabidopsis thaliana*.

Os-TP: 25 µg, 100 µg total protein from *Oryza sativa*, respectively.

Zm-TP: 25 µg, 100 µg total protein from *Zea mays*, respectively.

**Electrophoresis:** 10% SDS-PAGE

**Transfer:** blotting to NC (nitrocellulose) membrane for 1 h.

**Blocking:** 5% skim milk at RT or 4°C for 1 h.

**Primary antibody:** 1:5000 dilution overnight at 4°C.

**Secondary antibody:** 1:5000 dilution using Goat Anti-Rabbit IgG

H&L(HRP) (Cat# PHY6000).

**Detection:** using chemiluminescence substrate and image were captured with CCD camera.