

# Anti-Clathrin adaptor complexes medium subunit family protein antibody

Catalog: PHY0706A

## Product Information

<b>Description:</b>	Rabbit polyclonal antibody
<b>Background:</b>	AP2 $\mu$ is one of a subunit of the adaptor protein complex 2 (AP-2). The AP-2 complex has been generally thought to function as a heterotetramer, consisting of two large (a/A and b/B) (AT4G11380), one medium (m/M) (AT5G46630), and one small (s/S) (AT1G47830) subunit(s). AP-2 is involved in clathrin-dependent endocytosis in which cargo proteins are incorporated into vesicles surrounded by clathrin (clathrin-coated vesicles, CCVs) which are destined for fusion with the early endosome.
<b>Synonyms:</b>	AP2 $\mu$ , ADAPTOR PROTEIN-2 MU-ADAPTIN, AP2M
<b>Immunogen:</b>	KLH-conjugated synthetic peptide (15 aa from C terminal section) derived from <i>Arabidopsis thaliana</i> AP2 $\mu$ (AT5G46630).
<b>Form:</b>	Lyophilized
<b>Quantity:</b>	150 $\mu$ g
<b>Purification:</b>	Immunogen affinity purified
<b>Reconstitution:</b>	Reconstitution with 150 $\mu$ l of 0.01 M sterile PBS. "Note: please spin tube briefly prior to opening it to avoid any losses that might occur from lyophilized material adhering to the cap or sides of the tube".
<b>Stability &amp; Storage:</b>	Use a manual defrost freezer and avoid repeated freeze-thaw cycles. 12 months from date of receipt, -20 to -70°C as supplied. 6 months, -20 to -70°C under sterile conditions after reconstitution. 1 month, 2 to 8°C under sterile conditions after reconstitution.
<b>Shipping:</b>	The product is shipped at 4°C. Upon receipt, store it immediately at the temperature recommended above.

## Application Information

<b>Recommended Dilution:</b>	Western Blot (1:1000-1:2000) Note: Optimal dilutions/concentrations should be determined by the end user.
<b>Expected / apparent MW:</b>	49 / 48 kDa

Research Use Only

**Confirmed Reactivity:**

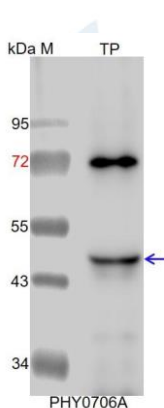
*Arabidopsis thaliana*

**Predicted Reactivity:**

Among species analyzed, the sequence of the synthetic peptide used for immunization is 100% homologues with the sequence in *Zea mays*, *Cucumis sativus*, *Brassica napus*, *Brassica rapa*, *Glycine max*, *Panicum virgatum*, *Solanum tuberosum*, *Nicotiana tabacum*, *Solanum lycopersicum*, *Populus trichocarpa*, *Setaria viridis*, *Gossypium raimondii*, *Triticum aestivum*, *Vitis vinifera*, *Oryza sativa* Japonica Group, *Medicago truncatula*, *Spinacia oleracea*, *Sorghum bicolor*, and 80-99% homologues with the sequence in *Physcomitrium patens*.

For more species homologues information, please contact tech support at [tech@phytoab.com](mailto:tech@phytoab.com).

## Application Example



TP: 20 µg total protein from *Arabidopsis thaliana*.

**Electrophoresis:** 15% SDS-PAGE

**Transfer:** blotting to NC (nitrocellulose) membrane for 1 h.

**Blocking:** 5% skim milk at RT or 4°C for 1 h.

**Primary antibody:** 1:2000 dilution overnight at 4°C.

**Secondary antibody:** 1:10000 dilution using Goat Anti-Rabbit IgG H&L(HRP) (Cat# PHY6000).

**Detection:** using chemiluminescence substrate and image were captured with CCD camera.