

# Anti-Photosystem I P700 chlorophyll a apoprotein A2, N-terminal antibody

Catalog: PHY5276S

## Product Information

<b>Description:</b>	Rabbit polyclonal antibody
<b>Background:</b>	PsaB
<b>Synonyms:</b>	PsaB
<b>Immunogen:</b>	KLH-conjugated synthetic peptide (12 aa from N terminal section) derived from <i>Synechocystis sp. PCC 6803</i> PsaB (slr1835).
<b>Form:</b>	Lyophilized
<b>Quantity:</b>	150 µg
<b>Purification:</b>	Serum  Peptide affinity form antibody available upon request at <a href="mailto:info@phytoab.com">info@phytoab.com</a> .
<b>Reconstitution:</b>	Reconstitution with 150 µl of sterile water.  "Note: please spin tube briefly prior to opening it to avoid any losses that might occur from lyophilized material adhering to the cap or sides of the tube".
<b>Stability &amp; Storage:</b>	Use a manual defrost freezer and avoid repeated freeze-thaw cycles.  12 months from date of receipt, -20 to -70°C as supplied.  6 months, -20 to -70°C under sterile conditions after reconstitution.  1 month, 2 to 8°C under sterile conditions after reconstitution.
<b>Shipping:</b>	The product is shipped at 4°C. Upon receipt, store it immediately at the temperature recommended above.

## Application Information

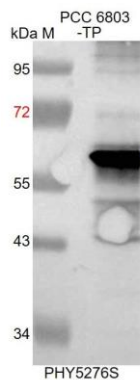
<b>Recommended Dilution:</b>	Western Blot (1:1000-1:2000)  Note: Optimal dilutions/concentrations should be determined by the end user.
<b>Expected / apparent MW:</b>	81 / 62 kDa
<b>Confirmed Reactivity:</b>	<i>Synechocystis sp. PCC 6803</i>
<b>Predicted Reactivity:</b>	Among species analyzed, the sequence of the synthetic peptide used for immunization is 80-99% homologues with the sequence in <i>Brassica rapa</i> , <i>Medicago truncatula</i> , <i>Solanum tuberosum</i> ,

Research Use Only

*Chlamydomonas reinhardtii*, *Oryza sativa*, *Zea mays*, *Brassica napus*, *Populus trichocarpa*, *Sorghum bicolor*, *Oryza sativa*, *Vitis vinifera*, *Triticum aestivum*, *Setaria viridis*, *Spinacia oleracea*, *Glycine max*, *Arabidopsis thaliana*, *Hordeum vulgare*, *Panicum virgatum*, *Solanum lycopersicum*, *Nicotiana tabacum*, *Cucumis sativus*, *Gossypium raimondii*, *Physcomitrium patens*.

For homologues with other species especially algae, please contact tech support at [tech@phytoab.com](mailto:tech@phytoab.com).

## Application Example



PCC 6803-TP: 15 µg total protein from *Synechocystis* sp. PCC 6803.

**Electrophoresis:** 12% SDS-PAGE

**Transfer:** blotting to NC (nitrocellulose) membrane for 1 h.

**Blocking:** 5% skim milk at RT or 4°C for 1 h.

**Primary antibody:** 1:1000 dilution overnight at 4°C.

**Secondary antibody:** 1:5000 dilution using Goat Anti-Rabbit IgG H&L(HRP) (Cat# PHY6000).

**Detection:** using chemiluminescence substrate and image were captured with CCD camera.