

# Anti-Photosystem I P700 chlorophyll a apoprotein A1, C-terminal antibody

Catalog: PHY5260S

## Product Information

<b>Description:</b>	Rabbit polyclonal antibody
<b>Background:</b>	PsaA and PsaB bind P700, the primary electron donor of photosystem I (PSI), as well as the electron acceptors A0, A1 and FX.
<b>Synonyms:</b>	PsaA
<b>Immunogen:</b>	KLH-conjugated synthetic peptide (14 aa from C terminal section) derived from <i>Synechocystis sp.</i> PCC 6803 PsaA (slr1834).
<b>Form:</b>	Lyophilized
<b>Quantity:</b>	150 µg
<b>Purification:</b>	Serum
	Peptide affinity form antibody available upon request at <a href="mailto:info@phytoab.com">info@phytoab.com</a> .
<b>Reconstitution:</b>	Reconstitution with 150 µl of sterile water. "Note: please spin tube briefly prior to opening it to avoid any losses that might occur from lyophilized material adhering to the cap or sides of the tube".
<b>Stability &amp; Storage:</b>	Use a manual defrost freezer and avoid repeated freeze-thaw cycles. 12 months from date of receipt, -20 to -70°C as supplied. 6 months, -20 to -70°C under sterile conditions after reconstitution. 1 month, 2 to 8°C under sterile conditions after reconstitution.
<b>Shipping:</b>	The product is shipped at 4°C. Upon receipt, store it immediately at the temperature recommended above.

## Application Information

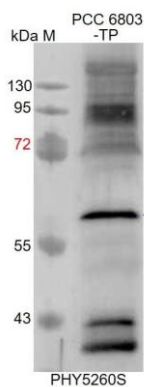
<b>Recommended Dilution:</b>	Western Blot (1:1000-1:2000) Note: Optimal dilutions/concentrations should be determined by the end user.
<b>Expected / apparent MW:</b>	83 / 60 kDa
<b>Confirmed Reactivity:</b>	<i>Synechocystis sp.</i> PCC 6803
<b>Predicted Reactivity:</b>	Among species analyzed, the sequence of the synthetic peptide used for immunization is 100% homologues with the sequence in <i>Brassica</i>

Research Use Only

*rapa, Medicago truncatula, Solanum tuberosum, Glycine max, Oryza sativa, Chlamydomonas reinhardtii, Zea mays, Arabidopsis thaliana, Panicum virgatum, Sorghum bicolor, Physcomitrium patens, Populus trichocarpa, Hordeum vulgare, Cucumis sativus, Brassica napus, Gossypium raimondii, Spinacia oleracea, Setaria viridis, Triticum aestivum, Nicotiana tabacum, Solanum lycopersicum, Vitis vinifera.*

For more species homologues information, please contact tech support at [tech@phytoab.com](mailto:tech@phytoab.com).

## Application Example



PCC 6803-TP: 50 µg total protein from *Synechocystis* sp. PCC 6803.

**Electrophoresis:** 12.5% SDS-PAGE

**Transfer:** blotting to NC (nitrocellulose) membrane for 1 h.

**Blocking:** 5% skim milk at RT or 4°C for 1 h.

**Primary antibody:** 1:1000 dilution overnight at 4°C.

**Secondary antibody:** 1:10000 dilution using Goat Anti-Rabbit IgG

H&L(HRP) (Cat# PHY6000).

**Detection:** using chemiluminescence substrate and image were captured with CCD camera.