

# Anti-Iron stress-induced chlorophyll-binding protein, C- terminal antibody

Catalog: PHY5190A

## Product Information

<b>Description:</b>	Rabbit polyclonal antibody
<b>Background:</b>	IsiA functions as an antenna for photosystem I (PSI) under iron-limiting conditions, when phycobilisomes disappear. In the (PSI) <sub>3</sub> (Isi) <sub>3</sub> 18 complex most of the harvested energy is probably used by PSI; in other PSI-containing supercomplexes a large part of the energy will probably not be used for light harvesting, but rather is dissipated to protect the organism from light damage.
<b>Synonyms:</b>	IsiA, CP43'
<b>Immunogen:</b>	KLH-conjugated synthetic peptide (15 aa from C terminal section) derived from <i>Synechocystis</i> sp. PCC 6803 IsiA (slI0247).
<b>Form:</b>	Lyophilized
<b>Quantity:</b>	150 µg
<b>Purification:</b>	Immunogen affinity purified
<b>Reconstitution:</b>	Reconstitution with 150 µl of 0.01 M sterile PBS. "Note: please spin tube briefly prior to opening it to avoid any losses that might occur from lyophilized material adhering to the cap or sides of the tube".
<b>Stability &amp; Storage:</b>	Use a manual defrost freezer and avoid repeated freeze-thaw cycles. 12 months from date of receipt, -20 to -70°C as supplied. 6 months, -20 to -70°C under sterile conditions after reconstitution. 1 month, 2 to 8°C under sterile conditions after reconstitution.
<b>Shipping:</b>	The product is shipped at 4°C. Upon receipt, store it immediately at the temperature recommended above.

## Application Information

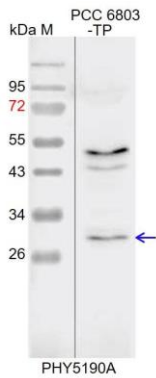
<b>Recommended Dilution:</b>	Western Blot (1:1000-1:2000) Note: Optimal dilutions/concentrations should be determined by the end user.
<b>Expected/apparent MW:</b>	37 / 28 kDa
<b>Confirmed Reactivity:</b>	<i>Synechocystis</i> sp. PCC 6803

Research Use Only

### Predicted Reactivity:

For homologues with other species especially algae, please contact tech support at [tech@phytoab.com](mailto:tech@phytoab.com).

## Application Example



PCC 6803-TP: 30 µg total protein from *Synechocystis sp.* PCC 6803.

**Electrophoresis:** 15% SDS-PAGE

**Transfer:** blotting to NC (nitrocellulose) membrane for 1 h.

**Blocking:** 5% skim milk at RT or 4°C for 1 h.

**Primary antibody:** 1:1000 dilution overnight at 4°C.

**Secondary antibody:** 1:10000 dilution using Goat Anti-Rabbit IgG H&L(HRP) (Cat# PHY6000).

**Detection:** using chemiluminescence substrate and image were captured with CCD camera.