

Anti-Triose phosphate/phosphate translocator TPTantibody

Catalog: PHY0872A

Product Information

Description:	Rabbit polyclonal antibody
Background:	TPT is a chloroplast triose phosphate / 3-phosphoglycerate translocator that transports triose phosphates derived from the Calvin cycle in the stroma to the cytosol for use in sucrose synthesis and other biosynthetic processes.
Synonyms:	TPT, ACCLIMATION OF PHOTOSYNTHESIS TO ENVIRONMENT 2, APE2, TRIOSE-PHOSPHATE/PHOSPHATE TRANSLOCATOR
Immunogen:	KLH-conjugated synthetic peptide (18 aa from C terminal section) derived from <i>Arabidopsis thaliana</i> TPT (AT5G46110).
Form:	Lyophilized
Quantity:	150 µg
Purification:	Immunogen affinity purified
Reconstitution:	Reconstitution with 150µl of 0.01M sterile PBS. "Note: please spin tube briefly prior to opening it to avoid any losses that might occur from lyophilized material adhering to the cap or sides of the tube".
Stability & Storage:	Use a manual defrost freezer and avoid repeated freeze-thaw cycles. 12 months from date of receipt, -20 to -70°C as supplied. 6 months, -20 to -70°C under sterile conditions after reconstitution. 1 month, 2 to 8°C under sterile conditions after reconstitution.
Shipping:	The product is shipped at 4°C. Upon receipt, store it immediately at the temperature recommended above.

Application Information

Recommended Dilution:	Western Blot (1:1000-1:2000) Note: Optimal dilutions/concentrations should be determined by the end user.
Expected / apparent MW:	45 / 29 kDa Apparent MW is also confirmed by Martino Tomizioli et al. (2014, Mol Cell Proteomics., 13(8): 2147–2167)
Confirmed Reactivity:	<i>Arabidopsis thaliana</i>

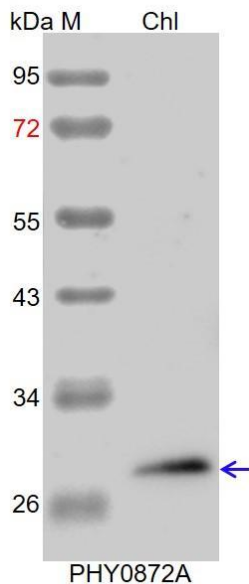
Research Use Only

Predicted Reactivity:

Among species analyzed, the sequence of the synthetic peptide used for immunization is 100% homologues with the sequence in *Brassica rapa*, *Brassica napus*, and 80-99% homologues with the sequence in *Hordeum vulgare*, *Gossypium raimondii*, *Oryza sativa*, *Solanum lycopersicum*, *Solanum tuberosum*, *Cucumis sativus*, *Zea mays*, *Sorghum bicolor*, *Setaria viridis*, *Triticum aestivum*, *Nicotiana tabacum*, *Medicago truncatula*, *Panicum virgatum*, *Glycine max*, *Vitis vinifera*, *Populus trichocarpa*.

For more species homologues information, please contact tech support at tech@phytoab.com.

Application Example



Chl: 7.5 µg total chloroplast protein from *Arabidopsis thaliana*.

Electrophoresis: 12% SDS-PAGE

Transfer: blotting to NC (nitrocellulose) membrane for 1 h.

Blocking: 5% skim milk at RT or 4°C for 1 h.

Primary antibody: 1:2000 dilution overnight at 4°C.

Secondary antibody: 1:10000 dilution using Goat Anti-Rabbit IgGH&L(HRP) (Cat# PHY6000).

Detection: using chemiluminescence substrate and image were captured with CCD camera.