

Anti-Heat shock protein 70, cytoplasmic antibody

Catalog: PHY0167

Product Information

Description:	Rabbit polyclonal antibody
Background:	Hsp70s function as molecular chaperones and are encoded by a multi-gene family whose members play a crucial role in plant response to stress conditions, and in plant growth and development.
Synonyms:	HSP70, ATHSP70
Immunogen:	KLH-conjugated synthetic peptide (14 aa from C terminal section) derived from <i>Arabidopsis thaliana</i> HSP70 (AT3G12580).
Form:	Lyophilized
Quantity:	150 µg
Purification:	Protein A purified
Reconstitution:	Reconstitution with 150 µl of 0.01 M sterile PBS. "Note: please spin tube briefly prior to opening it to avoid any losses that might occur from lyophilized material adhering to the cap or sides of the tube".
Stability & Storage:	Use a manual defrost freezer and avoid repeated freeze-thaw cycles. 12 months from date of receipt, -20 to -70°C as supplied. 6 months, -20 to -70°C under sterile conditions after reconstitution. 1 month, 2 to 8°C under sterile conditions after reconstitution.
Shipping:	The product is shipped at 4°C. Upon receipt, store it immediately at the temperature recommended above.

Application Information

Recommended Dilution:	Western Blot (1:1000-1:2000) Note: Optimal dilutions/concentrations should be determined by the end user.
Expected / apparent MW:	71 kDa
Confirmed Reactivity:	<i>Arabidopsis thaliana</i>
Predicted Reactivity:	Among species analyzed, the sequence of the synthetic peptide used for immunization is 100% homologues with the sequence in <i>Panicum virgatum</i> , <i>Oryza sativa</i> , <i>Setaria viridis</i> , <i>Sorghum bicolor</i> , <i>Zea mays</i> , <i>Glycine max</i> , <i>Solanum lycopersicum</i> , and 80-99% homologues with

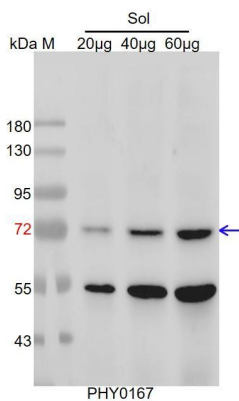
Research Use Only

the sequence in *Medicago truncatula*, *Triticum aestivum*, *Hordeum vulgare*, *Gossypium raimondii*, *Cucumis sativus*, *Spinacia oleracea*, *Populus trichocarpa*, *Solanum tuberosum*.

The sequence of the synthetic peptide used for immunization is 93% homologues with the sequence in AT3G09440, HSP70-1 (AT5G02500), and 86% homologues with the sequence in HSP70-2 (AT5G02490).

For more species homologues information, please contact tech support at tech@phytoab.com.

Application Example



Sol: 20 µg 40 µg and 60 µg soluble protein from *Arabidopsis thaliana* leaf.

Electrophoresis: 10% SDS-PAGE

Transfer: blotting to NC (nitrocellulose) membrane for 1 h.

Blocking: 5% skim milk at RT or 4°C for 1 h.

Primary antibody: 1:2000 dilution overnight at 4°C.

Secondary antibody: 1:20000 dilution using Goat Anti-Rabbit IgG H&L (HRP) (Cat# PHY6000).

Detection: using chemiluminescence substrate and image were captured with CCD camera.