

# Anti-Cytochrome c oxidase subunit COX1, mitochondrial antibody

Catalog: PHY1124S

## Product Information

<b>Description:</b>	Rabbit polyclonal antibody
<b>Background:</b>	Cytochrome c oxidase is the last enzyme in the respiratory electron transport chain of mitochondria and it is also called Complex IV. Cytochrome c oxidase receives an electron from each of four cytochrome c molecules, and transfers them to one oxygen molecule, converting molecular oxygen to two molecules of water. In higher plants mitochondria, Complex IV processes 14 subunits. COX1 (ATMG01360) is one subunit of the Complex IV.
<b>Synonyms:</b>	COX1, CYTOCHROME OXIDASE
<b>Immunogen:</b>	KLH-conjugated synthetic peptide (15 aa from N terminal section) derived from <i>Arabidopsis thaliana</i> COX1 (ATMG01360).
<b>Form:</b>	Lyophilized
<b>Quantity:</b>	150 µg
<b>Purification:</b>	Serum Peptide affinity form antibody available upon request at <a href="mailto:info@phytoab.com">info@phytoab.com</a> .
<b>Reconstitution:</b>	Reconstitution with 150 µl of sterile water. "Note: please spin tube briefly prior to opening it to avoid any losses that might occur from lyophilized material adhering to the cap or sides of the tube".
<b>Stability &amp; Storage:</b>	Use a manual defrost freezer and avoid repeated freeze-thaw cycles. 12 months from date of receipt, -20 to -70°C as supplied. 6 months, -20 to -70°C under sterile conditions after reconstitution. 1 month, 2 to 8°C under sterile conditions after reconstitution.
<b>Shipping:</b>	The product is shipped at 4°C. Upon receipt, store it immediately at the temperature recommended above.

## Application Information

<b>Recommended Dilution:</b>	Western Blot (1:1000-1:2000) Note: Optimal dilutions/concentrations should be determined by the end user.
<b>Expected / apparent MW:</b>	58 kDa

Research Use Only

**Confirmed Reactivity:**

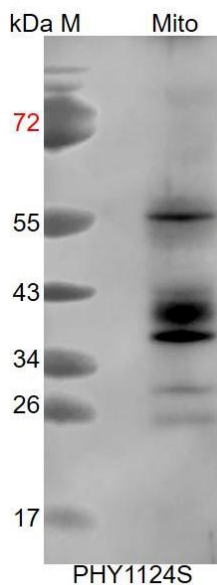
*Arabidopsis thaliana*

**Predicted Reactivity:**

Among species analyzed, the sequence of the synthetic peptide used for immunization is 100% homologues with the sequence in *Sorghum bicolor*, *Hordeum vulgare* subsp. *vulgare*, *Triticum aestivum*, *Gossypium raimondii*, *Zea mays*, *Zea mays* subsp. *mays*, *Vitis vinifera*, *Medicago truncatula*, *Glycine max*, *Cucumis sativus*, *Oryza sativa Japonica Group*.

For more species homologues information, please contact tech support at [tech@phytoab.com](mailto:tech@phytoab.com).

## Application Example



Mito: 7.5 µg mitochondria protein from *Arabidopsis thaliana* leaf.

**Electrophoresis:** 15% SDS-Urea-PAGE

**Transfer:** blotting to NC (nitrocellulose) membrane for 1 h.

**Blocking:** 5% skim milk at RT or 4°C for 1 h.

**Primary antibody:** 1:1000 dilution overnight at 4°C.

**Secondary antibody:** 1:10000 dilution using Goat Anti-Rabbit IgG H&L(HRP) (Cat# PHY6000).

**Detection:** using chemiluminescence substrate and image were captured with CCD camera.