

Anti-Lhcb7 protein of LHCII antibody

Catalog: PHY0471S

Product Information

Description:	Rabbit polyclonal antibody
Background:	The light-harvesting complex (LHC) functions as a light receptor; it captures and delivers excitation energy to photosystem. The nuclear LHCB7 gene is common in higher plants, encodes a transcript that is well expressed in a subset of leaf mesophyll cells, and is associated with a protein product that is homologous to pigment-binding components of the photosystem (PS) II peripheral antenna complex.
Synonyms:	Lhcb7
Immunogen:	KLH-conjugated synthetic peptide (15 aa from N terminal section) derived from <i>Arabidopsis thaliana</i> Lhcb7 (AT1G76570).
Form:	Lyophilized
Quantity:	150 µg
Purification:	Serum Peptide affinity form antibody available upon request at info@phytoab.com .
Reconstitution:	Reconstitution with 150 µl of sterile water. "Note: please spin tube briefly prior to opening it to avoid any losses that might occur from lyophilized material adhering to the cap or sides of the tube".
Stability & Storage:	Use a manual defrost freezer and avoid repeated freeze-thaw cycles. 12 months from date of receipt, -20 to -70°C as supplied. 6 months, -20 to -70°C under sterile conditions after reconstitution. 1 month, 2 to 8°C under sterile conditions after reconstitution.
Shipping:	The product is shipped at 4°C. Upon receipt, store it immediately at the temperature recommended above.

Application Information

Recommended Dilution:	Western Blot (1:1000-1:2000) Note: Optimal dilutions/concentrations should be determined by the end user.
Expected / apparent MW:	36 / 32 kDa

Research Use Only

Confirmed Reactivity:

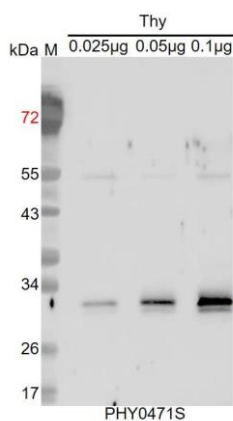
Arabidopsis thaliana

Predicted Reactivity:

Among species analyzed, the sequence of the synthetic peptide used for immunization is 80-99% homologues with the sequence in *Brassica rapa*, *Brassica napus*, *Cucumis sativus*.

For more species homologues information, please contact tech support at tech@phytoab.com.

Application Example



Thy: thylakoid membrane protein from *Arabidopsis thaliana* containing 0.025 µg, 0.05 µg and 0.1 µg of chlorophyll, respectively.

Electrophoresis: 15% SDS-Urea-PAGE

Transfer: blotting to NC (nitrocellulose) membrane for 1 h.

Blocking: 5% skim milk at RT or 4°C for 1 h.

Primary antibody: 1:1000 dilution overnight at 4°C.

Secondary antibody: 1:10000 dilution using Goat Anti-Rabbit IgG H&L(HRP) (Cat# PHY6000).

Detection: using chemiluminescence substrate and image were captured with CCD camera.