

# Anti-PYK10-binding protein 1 antibody

Catalog: PHY0879A

## Product Information

<b>Description:</b>	Rabbit polyclonal antibody
<b>Background:</b>	The PBP1 (PYK10-binding protein 1) assists the PYK10 (beta-glucosidase complex) in its activity and may act like a molecular chaperone that facilitates the correct polymerization of PYK10, when tissues are damaged and subcellular structures are destroyed by pests.
<b>Synonyms:</b>	PBP1, JACALIN-RELATED LECTIN 30, JAL30, PBP1, PBPI, PYK10-BINDING PROTEIN 1
<b>Immunogen:</b>	KLH-conjugated synthetic peptide (15 aa from C terminal section) derived from <i>Arabidopsis thaliana</i> PBP1 (AT3G16420).
<b>Form:</b>	Lyophilized
<b>Quantity:</b>	150 µg
<b>Purification:</b>	Immunogen affinity purified
<b>Reconstitution:</b>	Reconstitution with 150 µl of 0.01 M sterile PBS. "Note: please spin tube briefly prior to opening it to avoid any losses that might occur from lyophilized material adhering to the cap or sides of the tube".
<b>Stability &amp; Storage:</b>	Use a manual defrost freezer and avoid repeated freeze-thaw cycles. 12 months from date of receipt, -20 to -70°C as supplied. 6 months, -20 to -70°C under sterile conditions after reconstitution. 1 month, 2 to 8°C under sterile conditions after reconstitution.
<b>Shipping:</b>	The product is shipped at 4°C. Upon receipt, store it immediately at the temperature recommended above.

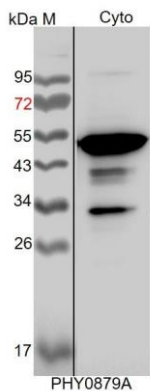
## Application Information

<b>Recommended Dilution:</b>	Western Blot (1:1000-1:2000) Note: Optimal dilutions/concentrations should be determined by the end user.
<b>Expected / apparent MW:</b>	32 kDa
<b>Confirmed Reactivity:</b>	<i>Arabidopsis thaliana</i>
<b>Predicted Reactivity:</b>	The sequence of the synthetic peptide used for immunization is 100%

Research Use Only

homologues with the sequence in PBP2 (AT3G16430).  
For more species homologues information, please contact tech support at [tech@phytoab.com](mailto:tech@phytoab.com).

## Application Example



Cyto: 15 µl cytosolic protein from *Arabidopsis thaliana*.

**Electrophoresis:** 15% SDS-PAGE

**Transfer:** blotting to NC (nitrocellulose) membrane for 1 h.

**Blocking:** 5% skim milk at RT or 4°C for 1 h.

**Primary antibody:** 1:2000 dilution overnight at 4°C.

**Secondary antibody:** 1:10000 dilution using Goat Anti-Rabbit IgG

H&L(HRP) (Cat# PHY6000).

**Detection:** using chemiluminescence substrate and image were captured with CCD camera.