

# Anti-L-ascorbate peroxidase antibody

Catalog: PHY1322A

## Product Information

<b>Description:</b>	Rabbit polyclonal antibody
<b>Background:</b>	Ascorbate peroxidases are enzymes that scavenge hydrogen peroxide in plant cells. Eight types of APX have been described for Arabidopsis: three cytosolic (APX1 (AT1G07890), APX2 (AT3G09640), APX6 (AT4G32320)), two chloroplastic types (stromal sAPX (AT4G08390), thylakoid tAPX (AT1G77490)), and three microsomal (APX3 (AT4G35000), APX4 (AT4G09010), APX5 (AT4G35970)) isoforms.
<b>Synonyms:</b>	TAPX, THYLAKOIDAL ASCORBATE PEROXIDASE
<b>Immunogen:</b>	KLH-conjugated synthetic peptide (14 aa from central section) derived from <i>Arabidopsis thaliana</i> TAPX (AT1G77490).
<b>Form:</b>	Lyophilized
<b>Quantity:</b>	150 µg
<b>Purification:</b>	Immunogen affinity purified
<b>Reconstitution:</b>	Reconstitution with 150 µl of 0.01 M sterile PBS. "Note: please spin tube briefly prior to opening it to avoid any losses that might occur from lyophilized material adhering to the cap or sides of the tube".
<b>Stability &amp; Storage:</b>	Use a manual defrost freezer and avoid repeated freeze-thaw cycles. 12 months from date of receipt, -20 to -70°C as supplied. 6 months, -20 to -70°C under sterile conditions after reconstitution. 1 month, 2 to 8°C under sterile conditions after reconstitution.
<b>Shipping:</b>	The product is shipped at 4°C. Upon receipt, store it immediately at the temperature recommended above.

## Application Information

<b>Recommended Dilution:</b>	Western Blot (1:1000-1:2000) Note: Optimal dilutions/concentrations should be determined by the end user.
<b>Expected / apparent MW:</b>	46 / 38 kDa
<b>Confirmed Reactivity:</b>	<i>Arabidopsis thaliana</i>

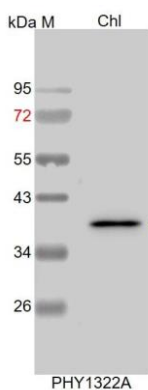
Research Use Only

### Predicted Reactivity:

Among species analyzed, the sequence of the synthetic peptide used for immunization is 100% homologues with the sequence in *Vitis vinifera*, and 80-99% homologues with the sequence in *Brassica rapa*, *Brassica napus*, *Gossypium raimondii*, *Medicago truncatula*, *Glycine max*, *Spinacia oleracea*, *Nicotiana tabacum*, *Solanum lycopersicum*, *Solanum tuberosum*, *Cucumis sativus*, *Populus trichocarpa*, *Sorghum bicolor*, *Panicum virgatum*, *Zea mays*, *Setaria viridis*.

For more species homologues information, please contact tech support at [tech@phytoab.com](mailto:tech@phytoab.com).

## Application Example



Chl: 80 µg total chloroplast protein from *Arabidopsis thaliana*.

**Electrophoresis:** 15% SDS-PAGE

**Transfer:** blotting to NC (nitrocellulose) membrane for 1 h.

**Blocking:** 5% skim milk at RT or 4°C for 1 h.

**Primary antibody:** 1:2000 dilution overnight at 4°C.

**Secondary antibody:** 1:10000 dilution using Goat Anti-Rabbit IgG H&L(HRP) (Cat# PHY6000).

**Detection:** using chemiluminescence substrate and image were captured with CCD camera.