

Anti-PsbW subunit of Photosystem II antibody

Catalog: PHY2421S

Product Information

Description:	Rabbit polyclonal antibody
Background:	PsbW is a nuclear-encoded PSII subunit and found in higher plants but not in cyanobacteria. PsbW has an apparent molecular mass of 6.1 kDa containing 54 amino acids. Loss of PsbW destabilizes the supramolecular organization of PSII.
Synonyms:	PsbW, Photosystem II reaction center W protein, chloroplastic, PSII 6.1 kDa protein
Immunogen:	KLH-conjugated synthetic peptide (14 aa from C terminal section) derived from <i>Arabidopsis thaliana</i> PsbW (AT2G30570).
Form:	Lyophilized
Quantity:	150 µg
Purification:	Serum Peptide affinity form antibody available upon request at info@phytoab.com .
Reconstitution:	Reconstitution with 150 µl of sterile water. "Note: please spin tube briefly prior to opening it to avoid any losses that might occur from lyophilized material adhering to the cap or sides of the tube".
Stability & Storage:	Use a manual defrost freezer and avoid repeated freeze-thaw cycles. 12 months from date of receipt, -20 to -70°C as supplied. 6 months, -20 to -70°C under sterile conditions after reconstitution. 1 month, 2 to 8°C under sterile conditions after reconstitution.
Shipping:	The product is shipped at 4°C. Upon receipt, store it immediately at the temperature recommended above.

Application Information

Recommended Dilution:	Western Blot (1:1000-1:2000) Note: Optimal dilutions/concentrations should be determined by the end user.
Expected / apparent MW:	14 / 9 kDa
Confirmed Reactivity:	<i>Arabidopsis thaliana</i>

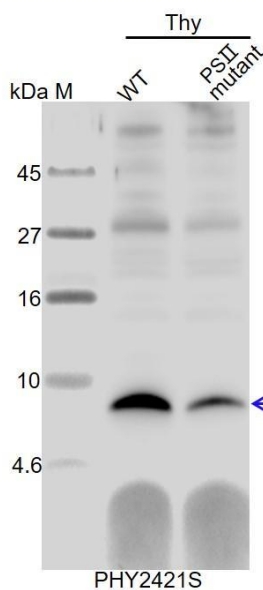
Research Use Only

Predicted Reactivity:

Among species analyzed, the sequence of the synthetic peptide used for immunization is 100% homologues with the sequence in *Hordeum vulgare*, *Triticum aestivum*, *Brassica rapa*, *Brassica napus*, *Sorghum bicolor*, *Medicago truncatula*, *Spinacia oleracea*, *Nicotiana tabacum*, *Vitis vinifera*, *Populus trichocarpa*, *Setaria viridis*, *Panicum virgatum*, *Solanum lycopersicum*, *Solanum tuberosum*, *Zea mays*, *Gossypium raimondii*, *Oryza sativa Japonica Group*, and 80-99% homologues with the sequence in *Physcomitrella patens*, *Cucumis sativus*, *Glycine max*.

For more species homologues information, please contact tech support at tech@phytoab.com.

Application Example



Thy-WT: thylakoid membrane protein from WT of *Arabidopsis thaliana* containing 2.5 µg of chlorophyll.

Thy-PSII mutant: thylakoid membrane protein from PSII mutant of *Arabidopsis thaliana* containing 2.5 µg of chlorophyll.

Electrophoresis: Tricine-SDS-PAGE

Transfer: blotting to NC (nitrocellulose) membrane for 1 h.

Blocking: 5% skim milk at RT or 4°C for 1 h.

Primary antibody: 1:2000 dilution overnight at 4°C.

Secondary antibody: 1:10000 dilution using Goat Anti-Rabbit IgG H&L (HRP) (Cat# PHY6000).

Detection: using chemiluminescence substrate and image were captured with CCD camera.