

Anti-Outer envelope protein 80, chloroplastic antibody

Catalog: PHY2423A

Product Information

Description:	Rabbit polyclonal antibody
Background:	The Toc75 and OEP80 proteins reside in the chloroplast outer envelope membrane. Both are members of the Omp85 superfamily of β -barrel proteins, and both are essential in Arabidopsis plants with important roles throughout development.
Synonyms:	OEP80, ARABIDOPSIS THALIANA OUTER ENVELOPE PROTEIN OF 80 KDA, ATOEP80, EMB213, EMBRYO DEFECTIVE 213, OUTER ENVELOPE PROTEIN OF 80 KDA, TOC75-V, TRANSLOCON AT THE OUTER ENVELOPE MEMBRANE OF CHLOROPLASTS 75-V
Immunogen:	KLH-conjugated synthetic peptide (13 aa from central section) derived from <i>Arabidopsis thaliana</i> OEP80 (AT5G19620).
Form:	Lyophilized
Quantity:	150 μ g
Purification:	Immunogen affinity purified
Reconstitution:	Reconstitution with 150 μ l of 0.01 M sterile PBS. "Note: please spin tube briefly prior to opening it to avoid any losses that might occur from lyophilized material adhering to the cap or sides of the tube".
Stability & Storage:	Use a manual defrost freezer and avoid repeated freeze-thaw cycles. 12 months from date of receipt, -20 to -70°C as supplied. 6 months, -20 to -70°C under sterile conditions after reconstitution. 1 month, 2 to 8°C under sterile conditions after reconstitution.
Shipping:	The product is shipped at 4°C. Upon receipt, store it immediately at the temperature recommended above.

Application Information

Recommended Dilution:	Western Blot (1:1000-1:2000) Note: Optimal dilutions/concentrations should be determined by the end user.
Expected / apparent MW:	80 / 70 kDa

Research Use Only

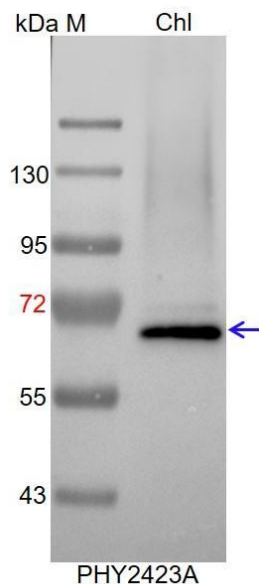
Confirmed Reactivity:

Arabidopsis thaliana

Predicted Reactivity:

Among species analyzed, the sequence of the synthetic peptide used for immunization is 80-99% homologues with the sequence in *Brassica rapa*, *Brassica napus*, *Populus trichocarpa*, *Gossypium raimondii*, *Vitis vinifera*, *Sorghum bicolor*, *Zea mays*, *Physcomitrium patens*, *Panicum virgatum*, *Setaria viridis*.
For more species homologues information, please contact tech support at tech@phytoab.com.

Application Example



Chl: 80µg total chloroplast protein from *Arabidopsis thaliana*.

Electrophoresis: 10% SDS-PAGE

Transfer: blotting to NC (nitrocellulose) membrane for 1 h.

Blocking: 5% skim milk at RT or 4°C for 1 h.

Primary antibody: 1:2000 dilution overnight at 4°C.

Secondary antibody: 1:10000 dilution using Goat Anti-Rabbit IgGH&L(HRP) (Cat# PHY6000).

Detection: using chemiluminescence substrate and image were captured with CCD camera.