

Anti-Epsilon subunit of tonoplast H⁺ATPase antibody

Catalog: PHY1035S

Product Information

Description:	Rabbit polyclonal antibody
Background:	VHA-E1/3 is subunit of the peripheral V1 complex of vacuolar ATPase essential for assembly or catalytic function. V-ATPase is responsible for acidifying a variety of intracellular compartments in eukaryotic cells.
Synonyms:	VHA-E1/3
Immunogen:	KLH-conjugated synthetic peptide (21 aa from N terminal section) derived from <i>Arabidopsis thaliana</i> VHA-E1 (AT4G11150) and VHA-E3 (AT1G64200).
Form:	Lyophilized
Quantity:	150 µg
Purification:	Serum Peptide affinity form antibody available upon request at info@phytoab.com .
Reconstitution:	Reconstitution with 150 µl of sterile water. "Note: please spin tube briefly prior to opening it to avoid any losses that might occur from lyophilized material adhering to the cap or sides of the tube".
Stability & Storage:	Use a manual defrost freezer and avoid repeated freeze-thaw cycles. 12 months from date of receipt, -20 to -70°C as supplied. 6 months, -20 to -70°C under sterile conditions after reconstitution. 1 month, 2 to 8°C under sterile conditions after reconstitution.
Shipping:	The product is shipped at 4°C. Upon receipt, store it immediately at the temperature recommended above.

Application Information

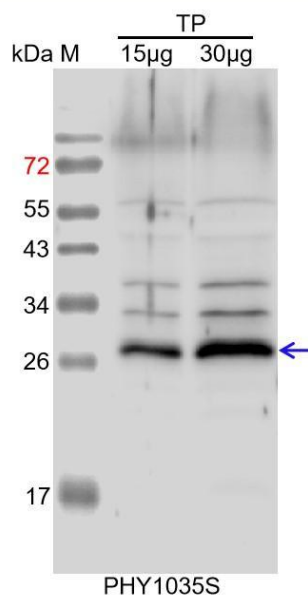
Recommended Dilution:	Western Blot (1:1000-1:2000) Note: Optimal dilutions/concentrations should be determined by the end user.
Expected / apparent MW:	26 kDa (VHA-E1), 27 kDa (VHA-E3) / 27 kDa
Confirmed Reactivity:	<i>Arabidopsis thaliana</i>
Predicted Reactivity:	Among species analyzed, the sequence of the synthetic peptide used for immunization is 100% homologues with the sequence in <i>Vitis</i>

Research Use Only

vinifera, *Solanum tuberosum*, *Brassica napus*, *Brassica rapa*, *Zea mays*, *Medicago truncatula*, *Glycine max*, *Nicotiana tabacum*, *Solanum lycopersicum*, *Triticum aestivum*, *Gossypium raimondii*, *Oryza sativa Japonica Group*, *Panicum virgatum*, *Setaria viridis*, *Sorghum bicolor*, *Populus trichocarpa*, *Spinacia oleracea*, *Cucumis sativus*, *Hordeum vulgare subsp. vulgare*, *Triticum aestivum*, *Medicago truncatula*.

For more species homologues information, please contact tech support at tech@phytoab.com.

Application Example



TP: 15µg and 30 µg total protein from *Arabidopsis thaliana*, respectively.

Electrophoresis: 15% SDS-PAGE

Transfer: blotting to NC (nitrocellulose) membrane for 1 h.

Blocking: 5% skim milk at RT or 4°C for 1 h.

Primary antibody: 1:2000 dilution overnight at 4°C.

Secondary antibody: 1:10000 dilution using Goat Anti-Rabbit IgG H&L (HRP) (Cat# PHY6000)

Detection: using chemiluminescence substrate and image were captured with CCD camera.