

Anti-RNA-binding (RRM/RBD/RNP motifs) family protein antibody

Catalog: PHY1448S

Product Information

| | |
|---------------------------------|--|
| Description: | Rabbit polyclonal antibody |
| Background: | HIGH PHOTOSYNTHETIC EFFICIENCY1 (HPE1) optimizes light-harvesting pigments, leading to improved photosynthetic efficiency and biomass production. HPE1 also interacts with other plastid RNA-splicing factors, including CAF1 (AT2G20020) and OTP51 (AT2G15820), which share common targets with HPE1. |
| Synonyms: | HPE1, HIGH PHOTOSYNTHETIC EFFICIENCY 1, RBD1, AT1G70200 |
| Immunogen: | KLH-conjugated synthetic peptide (14 aa from C terminal section) derived from <i>Arabidopsis thaliana</i> HPE1 (AT1G70200). |
| Form: | Lyophilized |
| Quantity: | 150 µg |
| Purification: | Serum Peptide affinity form antibody available upon request at info@phytoab.com . |
| Reconstitution: | Reconstitution with 150 µl of sterile water. "Note: please spin tube briefly prior to opening it to avoid any losses that might occur from lyophilized material adhering to the cap or sides of the tube". |
| Stability & Storage: | Use a manual defrost freezer and avoid repeated freeze-thaw cycles. 12 months from date of receipt, -20 to -70°C as supplied. 6 months, -20 to -70°C under sterile conditions after reconstitution. 1 month, 2 to 8°C under sterile conditions after reconstitution. |
| Shipping: | The product is shipped at 4°C. Upon receipt, store it immediately at the temperature recommended above. |

Application Information

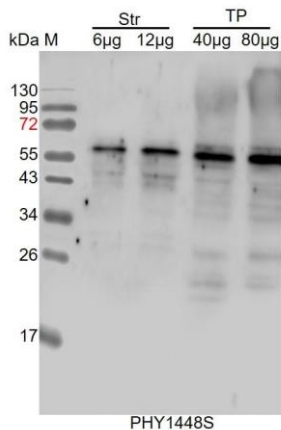
| | |
|--------------------------------|--|
| Recommended Dilution: | Western Blot (1:1000-1:2000) Note: Optimal dilutions/concentrations should be determined by the end user. |
| Expected / apparent MW: | 60 kDa |

Research Use Only

Confirmed Reactivity: *Arabidopsis thaliana*

Predicted Reactivity: For more species homologues information, please contact tech support at tech@phytoab.com.

Application Example



Str: 6 µg and 12 µg stromal protein from *Arabidopsis thaliana*, respectively.

TP: 40 µg and 80 µg total protein from *Arabidopsis thaliana*, respectively.

Electrophoresis: 15% SDS-PAGE

Transfer: blotting to NC (nitrocellulose) membrane for 1 h.

Blocking: 5% skim milk at RT or 4°C for 1 h.

Primary antibody: 1:1000 dilution overnight at 4°C.

Secondary antibody: 1:10000 dilution using Goat Anti-Rabbit IgG H&L(HRP) (Cat# PHY6000).

Detection: using chemiluminescence substrate and image were captured with CCD camera.