

Anti-Lhca2 protein of LHCI antibody

Catalog: PHY0668A

Product Information

Description:	Rabbit polyclonal antibody
Background:	The light-harvesting complex (LHC) functions as a light receptor, it captures and delivers excitation energy to photosystems with which it is closely associated. The Lhca2 is one of the four main and highly conserved types of chlorophyll a/b-binding proteins (Lhca1-4) of the light harvesting antenna (LHCI) of plant photosystem I. Lhca2 is imported as a precursor from the cytosol into the chloroplast. Upon integration in the thylakoid membrane Lhca2 forms a heterodimer (LHCI-680) with Lhca3 that associates with the PSI core close to PsaF and PsaK.
Synonyms:	Lhca2, LHCA2, PHOTOSYSTEM I LIGHT HARVESTING COMPLEX GENE 2
Immunogen:	KLH-conjugated synthetic peptide (15 aa from C terminal section) derived from <i>Arabidopsis thaliana</i> Lhca2 (AT3G61470).
Form:	Lyophilized
Quantity:	150 µg
Purification:	Immunogen affinity purified
Reconstitution:	Reconstitution with 150 µl of 0.01 M sterile PBS. "Note: please spin tube briefly prior to opening it to avoid any losses that might occur from lyophilized material adhering to the cap or sides of the tube".
Stability &Storage:	Use a manual defrost freezer and avoid repeated freeze-thaw cycles. 12 months from date of receipt, -20 to -70°C as supplied. 6 months, -20 to -70°C under sterile conditions after reconstitution. 1 month, 2 to 8°C under sterile conditions after reconstitution.
Shipping:	The product is shipped at 4°C. Upon receipt, store it immediately at the temperature recommended above.

Application Information

Recommended Dilution:	Western Blot (1:1000-1:4000) Note: Optimal dilutions/concentrations should be determined by the end user.
Expected / apparent MW:	28 / 24 kDa

Research Use Only

Confirmed Reactivity:

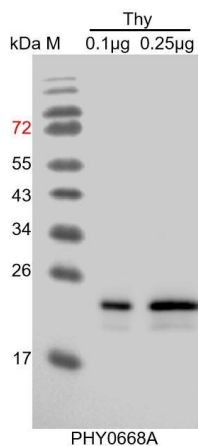
Arabidopsis thaliana

Predicted Reactivity:

Among species analyzed, the sequence of the synthetic peptide used for immunization is 100% homologues with the sequence in *Physcomitrium patens*, and 80-99% homologues with the sequence in *Brassica napus*, *Brassica rapa*, *Glycine max*, *Cucumis sativus*, *Vitis vinifera*, *Gossypium raimondii*, *Spinacia oleracea*, *Solanum tuberosum*, *Solanum lycopersicum*, *Medicago truncatula*, *Nicotiana tabacum*, *Populus trichocarpa*, *Oryza sativa Japonica Group*, *Triticum aestivum*, *Zea mays*, *Hordeum vulgare subsp. vulgare*, *Setaria viridis*, *Sorghum bicolor*.

For more species homologues information, please contact tech support at tech@phytoab.com.

Application Information



Thy: Thylakoid membrane protein from *Arabidopsis thaliana* containing 0.1 µg and 0.25 µg of chlorophyll, respectively.

Electrophoresis: 12% SDS-PAGE

Transfer: blotting to NC (nitrocellulose) membrane for 1 h.

Blocking: 5% skim milk at RT or 4°C for 1 h.

Primary antibody: 1:4000 dilution overnight at 4°C.

Secondary antibody: 1:10000 dilution using Goat Anti-Rabbit IgG H&L (HRP) (Cat# PHY6000).

Detection: using chemiluminescence substrate and image were captured with CCD camera.