

Anti-Transketolase-1, chloroplastic antibody

Catalog: PHY0407S

Product Information

Description:	Rabbit polyclonal antibody
Background:	TKL-1 (transketolase) is an essential enzyme of both the Calvin-Benson-Bassham cycle and the oxidative pentose phosphate pathway. It acts as a stress sensor involved in adaptation process.
Synonyms:	TKL-1, ATTKL1, TRANSKETOLASE 1
Immunogen:	KLH-conjugated synthetic peptide (15 aa from N terminal section) derived from <i>Arabidopsis thaliana</i> TKL-1 (AT3G60750).
Form:	Lyophilized
Quantity:	150 µg
Purification:	Serum Peptide affinity form antibody available upon request at info@phytoab.com .
Reconstitution:	Reconstitution with 150 µl of sterile water. "Note: please spin tube briefly prior to opening it to avoid any losses that might occur from lyophilized material adhering to the cap or sides of the tube".
Stability & Storage:	Use a manual defrost freezer and avoid repeated freeze-thaw cycles. 12 months from date of receipt, -20 to -70°C as supplied. 6 months, -20 to -70°C under sterile conditions after reconstitution. 1 month, 2 to 8°C under sterile conditions after reconstitution.
Shipping:	The product is shipped at 4°C. Upon receipt, store it immediately at the temperature recommended above.

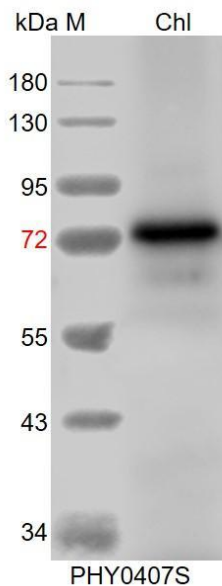
Application Information

Recommended Dilution:	Western Blot (1:1000-1:2000) Note: Optimal dilutions/concentrations should be determined by the end user.
Expected / apparent MW:	80 / 73 kDa
Confirmed Reactivity:	<i>Arabidopsis thaliana</i>
Predicted Reactivity:	Among species analyzed, the sequence of the synthetic peptide used for immunization is 100% homologues with the sequence in <i>Physcomitrium patens</i> , <i>Oryza sativa Japonica Group</i> , <i>Sorghum</i>

Research Use Only

bicolor, *Panicum virgatum*, *Medicago truncatula*, and 80-99% homologues with the sequence in *Setaria viridis*, *Zea mays*, *Solanum lycopersicum*, *Solanum tuberosum*, *Nicotiana tabacum*, *Brassica rapa*, *Brassica napus*, *Hordeum vulgare*, *Triticum aestivum*, *Glycine max*, *Gossypium raimondii*, *Populus trichocarpa*, *Vitis vinifera*. The sequence of the synthetic peptide used for immunization is 93% homologues with the sequence in TKL2 (AT2G45290). For more species homologues information, please contact tech support at tech@phytoab.com.

Application Example



Chl: 7.5 μ g total chloroplast protein from *Arabidopsis thaliana*.

Electrophoresis: 12% SDS-PAGE

Transfer: blotting to NC (nitrocellulose) membrane for 1 h.

Blocking: 5% skim milk at RT or 4°C for 1 h.

Primary antibody: 1:2000 dilution overnight at 4°C.

Secondary antibody: 1:10000 dilution using Goat Anti-Rabbit IgG H&L (HRP) (Cat# PHY6000).

Detection: using chemiluminescence substrate and image were captured with CCD camera.