

Anti-Sedoheptulose-1,7-bisphosphatase, chloroplastic antibody

Catalog: PHY0410S

Product Information

Description:	Rabbit polyclonal antibody
Background:	Sedoheptulose-1,7-bisphosphatase (SBPase) is a Calvin cycle enzyme and functions in photosynthetic carbon fixation.
Synonyms:	SBPase, SEDOHEPTULOSE-BISPHOSPHATASE
Immunogen:	KLH-conjugated synthetic peptide (15 aa from C terminal section) derived from <i>Arabidopsis thaliana</i> SBPase (AT3G55800).
Form:	Lyophilized
Quantity:	150 µg
Purification:	Serum Peptide affinity form antibody available upon request at info@phytoab.com .
Reconstitution:	Reconstitution with 150 µl of sterile water. "Note: please spin tube briefly prior to opening it to avoid any losses that might occur from lyophilized material adhering to the cap or sides of the tube".
Stability & Storage:	Use a manual defrost freezer and avoid repeated freeze-thaw cycles. 12 months from date of receipt, -20 to -70°C as supplied. 6 months, -20 to -70°C under sterile conditions after reconstitution. 1 month, 2 to 8°C under sterile conditions after reconstitution.
Shipping:	The product is shipped at 4°C. Upon receipt, store it immediately at the temperature recommended above.

Application Information

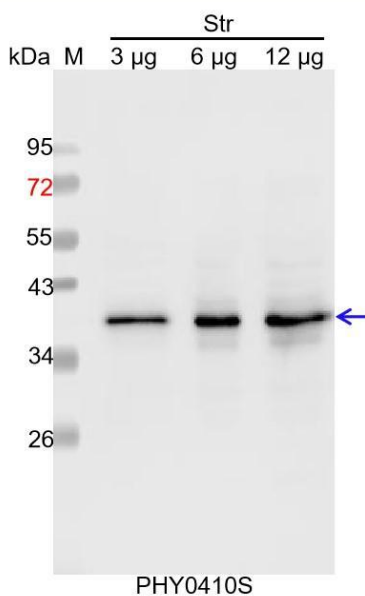
Recommended Dilution:	Western Blot (1:1000-1:2000) Note: Optimal dilutions/concentrations should be determined by the end user.
Expected / apparent MW:	42 / 38 kDa
Confirmed Reactivity:	<i>Arabidopsis thaliana</i>
Predicted Reactivity:	Among species analyzed, the sequence of the synthetic peptide used for immunization is 100% homologues with the sequence in <i>Solanum lycopersicum</i> , <i>Brassica rapa</i> , <i>Brassica napus</i> , <i>Solanum tuberosum</i> ,

Research Use Only

Nicotiana tabacum, *Gossypium raimondii*, *Populus trichocarpa*, and 80-99% homologues with the sequence in *Vitis vinifera*, *Oryza sativa* Japonica Group, *Medicago truncatula*, *Glycine max*, *Panicum virgatum*, *Setaria viridis*, *Triticum aestivum*, *Hordeum vulgare* subsp. *vulgare*, *Zea mays*, *Sorghum bicolor*, *Spinacia oleracea*, *Cucumis sativus*, *Physcomitrium patens*.

For more species homologues information, please contact tech support at tech@phytoab.com.

Application Example



Str: 3 µg, 6 µg and 12 µg stromal protein from *Arabidopsis thaliana*, respectively.

Electrophoresis: 15% SDS-PAGE

Transfer: blotting to NC (nitrocellulose) membrane for 1 h.

Blocking: 5% skim milk at RT or 4°C for 1 h.

Primary antibody: 1:2000 dilution overnight at 4°C.

Secondary antibody: 1:20000 dilution using Goat Anti-Rabbit IgG H&L (HRP) (Cat# PHY6000).

Detection: using chemiluminescence substrate and image were captured with CCD camera.