

Anti-Plant cell division protein ftsZ2-2, C-terminal antibody

Catalog: PHY0169

Product Information

Description:	Rabbit polyclonal antibody
Background:	FtsZ1 and FtsZ2 are phylogenetically distinct homologues of the tubulin-like bacterial cell division protein FtsZ that play major roles in the initiation and progression of plastid division in plant cells. FtsZ2 contains two family members (FtsZ2-1 and FtsZ2-2).
Synonyms:	FTSZ2-2
Immunogen:	KLH-conjugated synthetic peptide (14 aa from C terminal section) derived from <i>Arabidopsis thaliana</i> FtsZ2-2 (AT3G52750).
Form:	Lyophilized
Quantity:	150 µg
Purification:	Protein A purified
Reconstitution:	Reconstitution with 150 µl of 0.01 M sterile PBS. "Note: please spin tube briefly prior to opening it to avoid any losses that might occur from lyophilized material adhering to the cap or sides of the tube".
Stability & Storage:	Use a manual defrost freezer and avoid repeated freeze-thaw cycles. 12 months from date of receipt, -20 to -70°C as supplied. 6 months, -20 to -70°C under sterile conditions after reconstitution. 1 month, 2 to 8°C under sterile conditions after reconstitution.
Shipping:	The product is shipped at 4°C. Upon receipt, store it immediately at the temperature recommended above.

Application Information

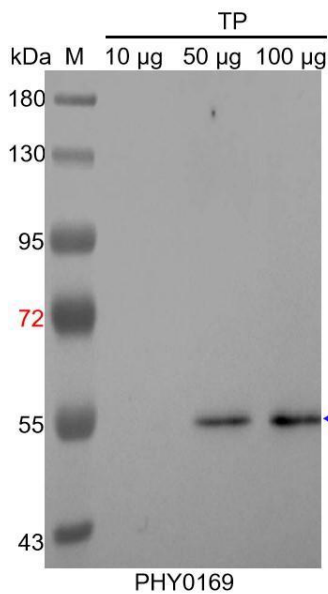
Recommended Dilution:	Western Blot (1:1000-1:2000) Note: Optimal dilutions/concentrations should be determined by the end user.
Expected / apparent MW:	50 / 55 kDa
Confirmed Reactivity:	<i>Arabidopsis thaliana</i>
Predicted Reactivity:	Among species analyzed, the sequence of the synthetic peptide used

Research Use Only

for immunization is 100% homologues with the sequence in *Brassica rapa*, *Cucumis sativus*, *Vitis vinifera*, *Populus trichocarpa*, *Glycine max*, *Gossypium raimondii*, *Brassica napus*, and 80-99% homologues with the sequence in *Medicago truncatula*, *Spinacia oleracea*, *Solanum tuberosum*, *Nicotiana tabacum*, *Solanum lycopersicum*.

For more species homologues information, please contact tech support at tech@phytoab.com.

Application Example



TP: 10 µg, 50 µg and 100 µg total protein from *Arabidopsis thaliana*, respectively.

Electrophoresis: 10% SDS-PAGE

Transfer: blotting to NC (nitrocellulose) membrane for 1 h.

Blocking: 5% skim milk at RT or 4°C for 1 h.

Primary antibody: 1:1000 dilution overnight at 4°C.

Secondary antibody: 1:20000 dilution using Goat Anti-Rabbit IgG H&L (HRP) (Cat# PHY6000).

Detection: using chemiluminescence substrate and image were captured with CCD camera.