

Anti-Absciscic acid receptor PYL1, N-terminal antibody

Catalog: PHY2733A

Product Information

| | |
|---------------------------------|---|
| Description: | Rabbit polyclonal antibody |
| Background: | PYL1 mediate ABA-dependent regulation of protein phosphatase 2Cs ABI1 and ABI2. PYL1 encodes a member of the PYR/PYL/RCAR family proteins with 14 members, and PYR/PYL/RCAR family proteins function as abscisic acid sensors. |
| Synonyms: | PYL1, PYR1-LIKE 1, RCAR12, REGULATORY COMPONENTS OF ABA RECEPTOR 12. |
| Immunogen: | KLH-conjugated synthetic peptide (16 aa from N terminal section) derived from <i>Arabidopsis thaliana</i> PYL1 (AT5G46790). |
| Form: | Lyophilized |
| Quantity: | 150 µg |
| Purification: | Immunogen affinity purified |
| Reconstitution: | Reconstitution with 150 µl of 0.01 M sterile PBS. "Note: please spin tube briefly prior to opening it to avoid any losses that might occur from lyophilized material adhering to the cap or sides of the tube". |
| Stability & Storage: | Use a manual defrost freezer and avoid repeated freeze-thaw cycles. 12 months from date of receipt, -20 to -70°C as supplied. 6 months, -20 to -70°C under sterile conditions after reconstitution. 1 month, 2 to 8°C under sterile conditions after reconstitution. |
| Shipping: | The product is shipped at 4°C. Upon receipt, store it immediately at the temperature recommended above. |

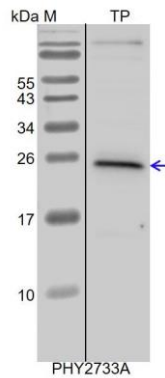
Application Information

| | |
|--------------------------------|--|
| Applications: | Western Blot (1:1000-1:3000) Note: Optimal dilutions/concentrations should be determined by the end user. |
| Expected / apparent MW: | 25 kDa |
| Confirmed Reactivity: | <i>Arabidopsis thaliana</i> |
| Predicted Reactivity: | For more species homologues information, please contact tech |

Research Use Only

support at tech@phytoab.com.

Application Example



TP: 20 µg total protein from *Arabidopsis thaliana*.

Electrophoresis: 15% SDS-PAGE

Transfer: blotting to NC (nitrocellulose) membrane for 1 h.

Blocking: 5% skim milk at RT or 4°C for 1 h.

Primary antibody: 1:3000 dilution overnight at 4°C.

Secondary antibody: 1:10000 dilution using Goat Anti-Rabbit IgG H&L(HRP)
(Cat# PHY6000).

Detection: using chemiluminescence substrate and image were
captured with CCD camera.