

Anti-L-ascorbate peroxidase 3 antibody

Catalog: PHY2424A

Product Information

Description:	Rabbit polyclonal antibody
Background:	APX3 is a microsomal ascorbate peroxidase. There are eight types of APX have been described for Arabidopsis: three cytosolic (APX1, APX2, APX6), two chloroplastic types (stromal sAPX, thylakoid tAPX), and three microsomal (APX3, APX4, APX5) isoforms. The APX3 protein interacts with AKR2, AFT1, a 14-3-3 protein.
Synonyms:	APX3, ASCORBATE PEROXIDASE 3
Immunogen:	KLH-conjugated synthetic peptide (20 aa from C terminal section) derived from <i>Arabidopsis thaliana</i> APX3 (AT4G35000).
Form:	Lyophilized
Quantity:	150 µg
Purification:	Immunogen affinity purified
Reconstitution:	Reconstitution with 150 µl of 0.01 M sterile PBS. "Note: please spin tube briefly prior to opening it to avoid any losses that might occur from lyophilized material adhering to the cap or sides of the tube".
Stability & Storage:	Use a manual defrost freezer and avoid repeated freeze-thaw cycles. 12 months from date of receipt, -20 to -70°C as supplied. 6 months, -20 to -70°C under sterile conditions after reconstitution. 1 month, 2 to 8°C under sterile conditions after reconstitution.
Shipping:	The product is shipped at 4°C. Upon receipt, store it immediately at the temperature recommended above.

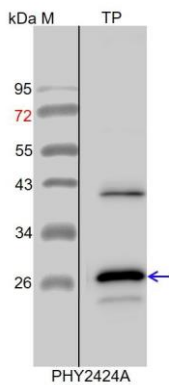
Application Information

Recommended Dilution:	Western Blot (1:1000-1:2000) Note: Optimal dilutions/concentrations should be determined by the end user.
Expected / apparent MW:	32 / 28 kDa
Confirmed Reactivity:	<i>Arabidopsis thaliana</i>
Predicted Reactivity:	Among species analyzed, the sequence of the synthetic peptide used for immunization is 100% homologues with the sequence in <i>Brassica</i>

Research Use Only

rapa, *Brassica napus*, *Populus trichocarpa*, *Spinacia oleracea*, and 80-99% homologues with the sequence in *Gossypium raimondii*, *Solanum lycopersicum*, *Nicotiana tabacum*, *Solanum tuberosum*, *Oryza sativa*, *Setaria viridis*, *Sorghum bicolor*, *Zea mays*, *Cucumis sativus*, *Glycine max*, *Medicago truncatula*, *Panicum virgatum*, *Vitis vinifera*, *Triticum aestivum*, *Hordeum vulgare subsp. vulgare*.
For more species homologues information, please contact tech support at tech@phytoab.com.

Application Example



TP: 15 µg total protein from *Arabidopsis thaliana*.

Electrophoresis: 15% SDS-PAGE

Transfer: blotting to NC (nitrocellulose) membrane for 1 h.

Blocking: 5% skim milk at RT or 4°C for 1 h.

Primary antibody: 1:2000 dilution overnight at 4°C.

Secondary antibody: 1:10000 dilution using Goat Anti-Rabbit IgG H&L(HRP)
(Cat# PHY6000).

Detection: using chemiluminescence substrate and image were captured with CCD camera.