

Anti-PsbQ subunit of oxygen evolving complex of Photosystem II antibody

Catalog: PHY2346A

Product Information

Description:	Rabbit polyclonal antibody
Background:	PsbQ is a 16 kD extrinsic subunit of the oxygen evolving complex of Photosystem II. PsbQ participates in the regulation of oxygen evolution and stabilizes the oxygen evolving complex of PSII. It is required for photoautotrophic growth under conditions of low light.
Synonyms:	PsbQ, OEC 16 kDa subunit, OEE3, PSBQA, 16 kDa subunit of oxygen evolving system of photosystem II, Oxygen-evolving enhancer protein 3-1, chloroplastic
Immunogen:	KLH-conjugated synthetic peptide (18 aa from central section) derived from <i>Arabidopsis thaliana</i> PsbQ (AT4G21280).
Form:	Lyophilized
Quantity:	150 µg
Purification:	Immunogen affinity purified
Reconstitution:	Reconstitution with 150 µl of 0.01 M sterile PBS. "Note: please spin tube briefly prior to opening it to avoid any losses that might occur from lyophilized material adhering to the cap or sides of the tube".
Stability & Storage:	Use a manual defrost freezer and avoid repeated freeze-thaw cycles. 12 months from date of receipt, -20 to -70°C as supplied. 6 months, -20 to -70°C under sterile conditions after reconstitution. 1 month, 2 to 8°C under sterile conditions after reconstitution.
Shipping:	The product is shipped at 4°C. Upon receipt, store it immediately at the temperature recommended above.

Application Information

Recommended Dilution:	Western Blot (1:1000-1:2000) Note: Optimal dilutions/concentrations should be determined by the end user.
Expected / apparent MW:	24 / 16 kDa
Confirmed Reactivity:	<i>Arabidopsis thaliana</i>

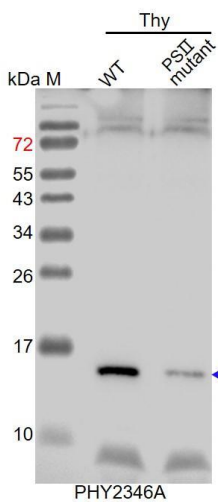
Research Use Only

Predicted Reactivity:

Among species analyzed, the sequence of the synthetic peptide used for immunization is 80-99% homologues with the sequence in *Brassica rapa*, *Brassica napus*, *Sorghum bicolor*, *Hordeum vulgare*, *Triticum aestivum*, *Zea mays*, *Setaria viridis*, *Panicum virgatum*, *Populus trichocarpa*, *Solanum tuberosum*, *Solanum lycopersicum*, *Nicotiana tabacum*.

For more species homologues information, please contact tech support at tech@phytoab.com.

Application Example



Thy-WT: thylakoid membrane protein from WT of *Arabidopsis thaliana* containing 1 μ g of chlorophyll.

Thy-PS II : thylakoid membrane protein from an Arabidopsis mutant with low accumulation of PS II containing 1 μ g of chlorophyll.

Electrophoresis: 15% SDS-PAGE

Transfer: blotting to NC (nitrocellulose) membrane for 1 h.

Blocking: 5% skim milk at RT or 4°C for 1 h.

Primary antibody: 1:2000 dilution overnight at 4°C.

Secondary antibody: 1:10000 dilution using Goat Anti-Rabbit IgG H&L(HRP) (Cat# PHY6000).

Detection: using chemiluminescence substrate and image were captured with CCD camera.