

# Anti-PsbO subunit of oxygen evolving complex of Photosystem II antibody

Catalog: PHY2252S

## Product Information

<b>Description:</b>	Rabbit polyclonal antibody
<b>Background:</b>	PsbO is an extrinsic subunit of photosystem II, which has been proposed to play a central role in stabilization of the catalytic manganese cluster. In <i>Arabidopsis thaliana</i> , the PsbO proteins are encoded by two genes: <i>psbO1</i> (AT5G66570) and <i>psbO2</i> (AT3G50820). PsbO1 is the major isoform in <i>Arabidopsis</i> .
<b>Synonyms:</b>	PsbO, OEE1, 33 kDa subunit of oxygen evolving system of photosystem II, 33 kDa thylakoid membrane protein, Manganese-stabilizing protein 1, MSP-1, OEC 33 kDa subunit, 33 kDa of the oxygen evolving complex (OEC) of PSII, Oxygen-evolving enhancer protein 1, chloroplastic
<b>Immunogen:</b>	Recombinant protein (91-183 aa) derived from <i>Arabidopsis thaliana</i> PsbO (AT5G66570).
<b>Form:</b>	Lyophilized
<b>Quantity:</b>	150 µg
<b>Purification:</b>	Serum
<b>Reconstitution:</b>	Reconstitution with 150 µl of sterile water. "Note: please spin tube briefly prior to opening it to avoid any losses that might occur from lyophilized material adhering to the cap or sides of the tube".
<b>Stability &amp; Storage:</b>	Use a manual defrost freezer and avoid repeated freeze-thaw cycles. 12 months from date of receipt, -20 to -70°C as supplied. 6 months, -20 to -70°C under sterile conditions after reconstitution. 1 month, 2 to 8°C under sterile conditions after reconstitution.
<b>Shipping:</b>	The product is shipped at 4°C. Upon receipt, store it immediately at the temperature recommended above.

## Application Information

<b>Recommended Dilution:</b>	Western Blot (1:1000-1:2000)  Note: Optimal dilutions/concentrations should be determined by the end user.
------------------------------	--

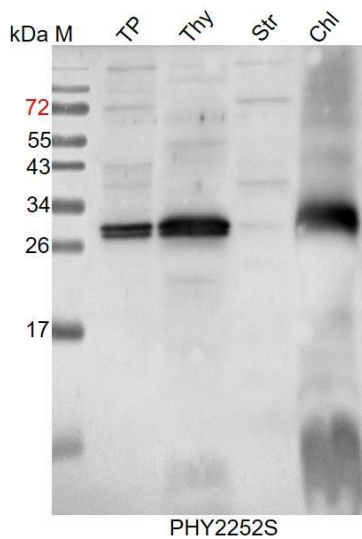
Research Use Only

**Expected / apparent MW:** 35 / 27 kDa

**Confirmed Reactivity:** *Arabidopsis thaliana*

**Predicted Reactivity:** For more species homologues information, please contact tech support at [tech@phytoab.com](mailto:tech@phytoab.com).

## Application Example



TP: 18 µg total protein from *Arabidopsis thaliana*.

Thy: thylakoid membrane protein from *Arabidopsis thaliana* containing 5 µg of chlorophyll.

Str: 12 µg stromal protein from *Arabidopsis thaliana*.

Chl: 10 µl total chloroplast protein from *Arabidopsis thaliana*.

**Electrophoresis:** 15% SDS-PAGE

**Transfer:** blotting to NC (nitrocellulose) membrane for 1 h.

**Blocking:** 5% skim milk at RT or 4°C for 1 h.

**Primary antibody:** 1:1000 dilution overnight at 4°C.

**Secondary antibody:** 1:10000 dilution using Goat Anti-Rabbit IgG H&L(HRP) (Cat# PHY6000).

**Detection:** using chemiluminescence substrate and image were captured with CCD camera.