

Anti-Cytochrome f antibody

Catalog: PHY0321

Product Information

| | |
|---------------------------------|---|
| Description: | Rabbit polyclonal antibody |
| Background: | Cytochrome f is a component of cytochrome b6/f complex, which mediates electron transfer between photosystem II (PSII) and photosystem I (PSI), cyclic electron flow around PSI, and state transitions. |
| Synonyms: | PetA, photosynthetic electron transfer A, Cyt f. |
| Immunogen: | Recombinant protein (1-320 aa) derived from <i>Arabidopsis thaliana</i> PetA (ATCG00540). |
| Form: | Lyophilized |
| Quantity: | 150 µg |
| Purification: | Protein A purified |
| Reconstitution: | Reconstitution with 150 µl of 0.01 M sterile PBS. "Note: please spin tube briefly prior to opening it to avoid any losses that might occur from lyophilized material adhering to the cap or sides of the tube". |
| Stability & Storage: | Use a manual defrost freezer and avoid repeated freeze-thaw cycles. 12 months from date of receipt, -20 to -70°C as supplied. 6 months, -20 to -70°C under sterile conditions after reconstitution. 1 month, 2 to 8°C under sterile conditions after reconstitution. |
| Shipping: | The product is shipped at 4°C. Upon receipt, store it immediately at the temperature recommended above. |

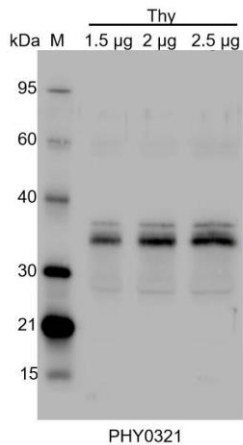
Application Information

| | |
|--------------------------------|--|
| Recommended Dilution: | Western Blot(1:1000-1:2000) Note: Optimal dilutions/concentrations should be determined by the end user. |
| Expected / apparent MW: | 35 kDa |
| Confirmed Reactivity: | <i>Arabidopsis thaliana</i> |
| Predicted Reactivity: | For more species homologues information, please contact tech support at tech@phytoab.com . |

Research Use Only

Application Example

Example 1



Thy: thylakoid membrane protein from *Arabidopsis thaliana* leaf containing 1.5 µg, 2 µg, and 2.5 µg of chlorophyll, respectively.

Electrophoresis: 15% SDS-Urea-PAGE

Transfer: blotting to NC (nitrocellulose) membrane for 1 h.

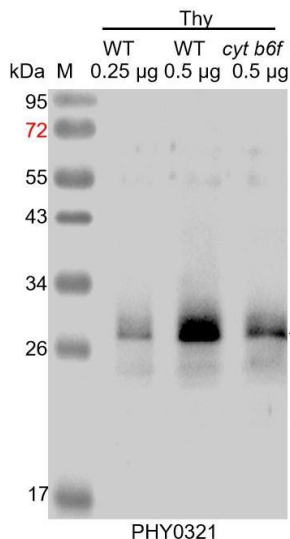
Blocking: 5% skim milk at RT or 4°C for 1 h.

Primary antibody: 1:1000 dilution overnight at 4°C.

Secondary antibody: 1:20000 dilution using Goat Anti-Rabbit IgG H&L (HRP) (Cat# PHY6000).

Detection: using chemiluminescence substrate and image were captured with CCD camera.

Example 2



Thy-WT: thylakoid membrane protein from WT of *Arabidopsis thaliana* leaf containing 0.25 µg and 0.5 µg of chlorophyll, respectively.

Thy-*cyt b6f*: thylakoid membrane protein from *Arabidopsis* mutant with low accumulation of Cyt b6f complex containing 0.5 µg of chlorophyll.

Electrophoresis: 15% SDS-Urea-PAGE

Transfer: blotting to NC (nitrocellulose) membrane for 1 h.

Blocking: 5% skim milk at RT or 4°C for 1 h.

Primary antibody: 1:2000 dilution overnight at 4°C.

Secondary antibody: 1:10000 dilution using Goat Anti-Rabbit IgG H&L(HRP) (Cat# PHY6000).

Detection: using chemiluminescence substrate and image were captured with CCD camera.