

Anti-Class I chitinase antibody

Catalog: PHY0018

Product Information

Description:	Rabbit polyclonal antibody
Background:	Chitinases are hydrolytic enzymes that break down glycosidic bonds in chitin.
Synonyms:	ChtC1, ATHCHIB, B-CHI, BASIC CHITINASE, PR-3, PR3, CHI-B, HCHIB, PATHOGENESIS-RELATED 3
Immunogen:	KLH-conjugated synthetic peptide(15 aa from C terminal section) derived from <i>Solanum tuberosum</i> ChtC1 (NP_001275122.1).
Form:	Lyophilized
Quantity:	150 µg
Purification:	Protein A purified
Reconstitution:	Reconstitution with 150 µl of 0.01 M sterile PBS. "Note: please spin tube briefly prior to opening it to avoid any losses that might occur from lyophilized material adhering to the cap or sides of the tube".
Stability & Storage:	Use a manual defrost freezer and avoid repeated freeze-thaw cycles. 12 months from date of receipt, -20 to -70°C as supplied. 6 months, -20 to -70°C under sterile conditions after reconstitution. 1 month, 2 to 8°C under sterile conditions after reconstitution.
Shipping:	The product is shipped at 4°C. Upon receipt, store it immediately at the temperature recommended above.

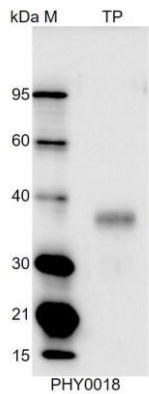
Application Information

Recommended Dilution:	Western Blot (1:1000-1:2000) Note: Optimal dilutions/concentrations should be determined by the end user.
Expected / apparent MW:	35 / 36 kDa
Confirmed Reactivity:	<i>Arabidopsis thaliana</i> (93% homologues with the sequence in <i>Arabidopsis thaliana</i> AT3G12500)
Predicted Reactivity:	Among species analyzed, the sequence of the synthetic peptide used for immunization is 80-99% homologues with the sequence in <i>Solanum lycopersicum</i> , <i>Nicotiana tabacum</i> , <i>Brassica napus</i> , <i>Brassica rapa</i> , <i>Medicago truncatula</i> .

Research Use Only

For more species homologues information, please contact tech support at tech@phytoab.com.

Application Example



TP: 10 µg total protein from *Arabidopsis thaliana*.

Electrophoresis: 15% SDS-PAGE

Transfer: blotting to NC (nitrocellulose) membrane for 1 h.

Blocking: 5% skim milk at RT or 4°C for 1 h.

Primary antibody: 1:1000 dilution overnight at 4°C.

Secondary antibody: 1:20000 dilution using Goat Anti-Rabbit IgG H&L (HRP) (Cat# PHY6000).

Detection: using chemiluminescence substrate and image were captured with CCD camera.