

Anti-PsaD subunit of Photosystem I, C-terminal antibody

Catalog: PHY0366A

Product Information

Description:	Rabbit polyclonal antibody
Background:	Photosystem I (PSI) consists of at least eleven subunits in the thylakoid membrane, and mediates photosynthetic electron transfer from plastocyanin to ferredoxin. PsaD subunit, which is located at the stromal surface of the PSI, is thought to be the docking site of ferredoxin, and encoded by the nuclear gene <i>PsaD-1</i> (AT4G02770) and <i>PsaD-2</i> (AT1G03130).
Synonyms:	PsaD, PSI-D
Immunogen:	KLH-conjugated synthetic peptide (14 aa from C terminal section) derived from <i>Arabidopsis thaliana</i> PsaD-1 (AT4G02770) and PsaD-2 (AT1G03130).
Form:	Lyophilized
Quantity:	150 µg
Purification:	Immunogen affinity purified
Reconstitution:	Reconstitution with 150 µl of 0.01 M sterile PBS. "Note: please spin tube briefly prior to opening it to avoid any losses that might occur from lyophilized material adhering to the cap or sides of the tube".
Stability & Storage:	Use a manual defrost freezer and avoid repeated freeze-thaw cycles. 12 months from date of receipt, -20 to -70°C as supplied. 6 months, -20 to -70°C under sterile conditions after reconstitution. 1 month, 2 to 8°C under sterile conditions after reconstitution.
Shipping:	The product is shipped at 4°C. Upon receipt, store it immediately at the temperature recommended above.

Application Information

Recommended Dilution:	Western Blot (1:1000-1:2000) Note: Optimal dilutions/concentrations should be determined by the end user.
Expected / apparent MW:	22 / 18 kDa
Confirmed Reactivity:	<i>Arabidopsis thaliana</i>

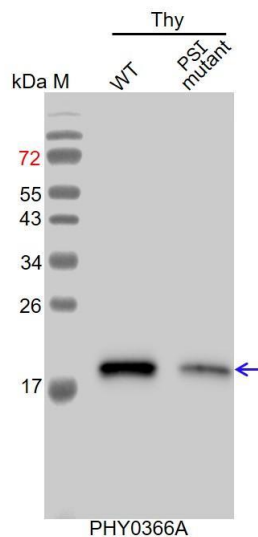
Research Use Only

Predicted Reactivity:

Among species analyzed, the sequence of the synthetic peptide used for immunization is 80-99% homologues with the sequence in *Gossypium raimondii*, *Zea mays*, *Nicotiana tabacum*, *Spinacia oleracea*, *Medicago truncatula*, *Solanum lycopersicum*, *Cucumis sativus*, *Solanum tuberosum*, *Populus trichocarpa*, *Vitis vinifera*, *Brassica rapa*, *Brassica napus*, *Physcomitrium patens*, *Hordeum vulgare*, *Glycine max*, *Triticum aestivum*, *Setaria viridis*, *Panicum virgatum*, *Oryza sativa*, *Sorghum bicolor*.

For more species homologues information, please contact tech support at tech@phytoab.com.

Application Example



Thy-WT: thylakoid membrane protein from WT of *Arabidopsis thaliana* containing 0.5 µg of chlorophyll.

Thy-PS I mutant: thylakoid membrane protein from an *Arabidopsis* mutant with low accumulation of PS I containing 0.5 µg of chlorophyll.

Electrophoresis: 15% SDS- PAGE

Transfer: blotting to NC (nitrocellulose) membrane for 1 h.

Blocking: 5% skim milk at RT or 4°C for 1 h.

Primary antibody: 1:2000 dilution overnight at 4°C.

Secondary antibody: 1:10000 dilution using Goat Anti-Rabbit IgG H&L (HRP) (Cat# PHY6000)

Detection: using chemiluminescence substrate and image were captured with CCD camera.