

# Anti-PsbL subunit of Photosystem II, N-terminal antibody

Catalog: PHY3227S

## Product Information

<b>Description:</b>	Rabbit polyclonal antibody
<b>Background:</b>	PsbL is a subunit of Photosystem II. This subunit has a molecular mass of 4.5kDa and localized at the monomer-monomer interface of Photosystem II. PsbL consists of a single membrane-spanning domain and seems to be required for normal functioning at the QA site.
<b>Synonyms:</b>	PsbL, PHOTOSYSTEM II REACTION CENTER PROTEIN L
<b>Immunogen:</b>	KLH-conjugated synthetic peptide of (14 aa from N terminal section) derived from <i>Arabidopsis thaliana</i> PsbL (ATCG00560).
<b>Form:</b>	Lyophilized
<b>Quantity:</b>	150 µg
<b>Purification:</b>	Serum Peptide affinity form antibody available upon request at <a href="mailto:info@phytoab.com">info@phytoab.com</a> .
<b>Reconstitution:</b>	Reconstitution with 150 µl of sterile water. "Note: please spin tube briefly prior to opening it to avoid any losses that might occur from lyophilized material adhering to the cap or sides of the tube".
<b>Stability &amp; Storage:</b>	Use a manual defrost freezer and avoid repeated freeze-thaw cycles. 12 months from date of receipt, -20 to -70°C as supplied. 6 months, -20 to -70°C under sterile conditions after reconstitution. 1 month, 2 to 8°C under sterile conditions after reconstitution.
<b>Shipping:</b>	The product is shipped at 4°C. Upon receipt, store it immediately at the temperature recommended above.

## Application Information

<b>Recommended Dilution:</b>	Western Blot (1:1000-1:2000) Note: Optimal dilutions/concentrations should be determined by the end user.
<b>Expected / apparent MW:</b>	4 kDa
<b>Confirmed Reactivity:</b>	<i>Arabidopsis thaliana</i>

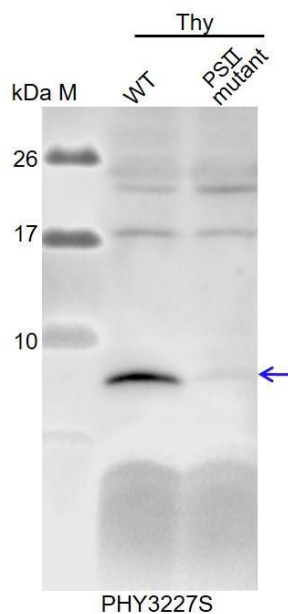
Research Use Only

### Predicted Reactivity:

Among species analyzed, the sequence of the synthetic peptide used for immunization is 80-99% homologues with the sequence in *Oryza sativa*, *Triticum aestivum*, *Solanum lycopersicum*, *Solanum tuberosum*, *Brassica napus*, *Glycine max*, *Sorghum bicolor*, *Medicago truncatula*, *Vitis vinifera*, *Gossypium raimondii*, *Physcomitrella patens*.

For homologues with other species especially algae, please contact tech support at [tech@phytoab.com](mailto:tech@phytoab.com).

### Application Example



Thy-WT is thylakoid membrane protein from WT of *Arabidopsis thaliana* containing 2.5 µg of chlorophyll.

Thy-PS II is thylakoid membrane protein from an *Arabidopsis* mutant with low accumulation of PS II containing 2.5 µg of chlorophyll.

**Electrophoresis:** Tricine-SDS-PAGE

**Transfer:** blotting to NC (nitrocellulose) membrane for 1 h.

**Blocking:** 5% skim milk at RT or 4°C for 1 h.

**Primary antibody:** 1:1000 dilution overnight at 4°C.

**Secondary antibody:** 1:10000 dilution using Goat Anti-Rabbit IgG H&L (HRP) (Cat# PHY6000).

**Detection:** using chemiluminescence substrate and image were captured with CCD camera.