

Anti-Elongation factor 1-gamma 1 and 2 antibody

Catalog: PHY0219S

Product Information

Description:	Rabbit polyclonal antibody
Background:	eEF1B-gamma 1 and 2 belong to translation elongation factor EF1B, they are involved in translational elongation.
Synonyms:	eEF1B-gamma1/2, EF-1-gamma 1/2, eEF-1B gamma 1/2
Immunogen:	KLH-conjugated synthetic peptide (14 aa from C terminal section) derived from <i>Arabidopsis thaliana</i> eEF1B-gamma 1 (AT1G09640) and eEF1B-gamma 2 (AT1G57720).
Form:	Lyophilized
Quantity:	150 µg
Purification:	Serum Peptide affinity form antibody available upon request at info@phytoab.com .
Reconstitution:	Reconstitution with 150 µl of sterile water. "Note: please spin tube briefly prior to opening it to avoid any losses that might occur from lyophilized material adhering to the cap or sides of the tube".
Stability & Storage:	Use a manual defrost freezer and avoid repeated freeze-thaw cycles. 12 months from date of receipt, -20 to -70°C as supplied. 6 months, -20 to -70°C under sterile conditions after reconstitution. 1 month, 2 to 8°C under sterile conditions after reconstitution.
Shipping:	The product is shipped at 4°C. Upon receipt, store it immediately at the temperature recommended above.

Application Information

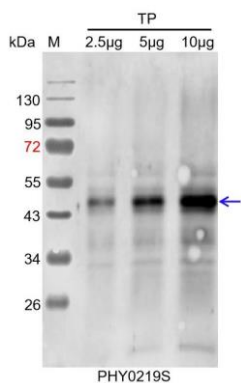
Recommended Dilution:	Western Blot (1:1000-1:2000) Note: Optimal dilutions/concentrations should be determined by the end user.
Expected / apparent MW:	47 kDa
Confirmed Reactivity:	<i>Arabidopsis thaliana</i>
Predicted Reactivity:	Among species analyzed, the sequence of the synthetic peptide used for immunization is 100% homologues with the sequence in <i>Triticum</i>

Research Use Only

aestivum, *Hordeum vulgare*, and 80-99% homologues with the sequence in *Zea mays*, *Vitis vinifera*, *Brassica rapa*, *Brassica napus*, *Populus trichocarpa*, *Gossypium raimondii*, *Solanum tuberosum*, *Medicago truncatula*, *Glycine max*, *Sorghum bicolor*, *Panicum virgatum*, *Setaria viridis*, *Solanum lycopersicum*, *Spinacia oleracea*, *Nicotiana tabacum*, *Oryza sativa*.

For more species homologues information, please contact tech support at tech@phytoab.com.

Application Example



TP: 2.5 µg, 5 µg and 20 µg total protein from *Arabidopsis thaliana*, respectively.

Electrophoresis: 12% SDS-PAGE

Transfer: blotting to NC (nitrocellulose) membrane for 1 h.

Blocking: 5% skim milk at RT or 4°C for 1 h.

Primary antibody: 1:1000 dilution overnight at 4°C.

Secondary antibody: 1:10000 dilution using Goat Anti-Rabbit IgG H&L(HRP) (Cat# PHY6000).

Detection: using chemiluminescence substrate and image were captured with CCD camera.