

Anti-RING-box protein 1 antibody

Catalog: PHY0908S

Product Information

Description:	Rabbit polyclonal antibody
Background:	A ring-box 1 like protein is a component of the SCF ubiquitination complex mediating auxin responses. It forms a E3 ubiquitin ligase complex with CUL3A and a BTB domain protein. AtRbx1 expression affects the inducible accumulation of JA-inducible gene expression.
Synonyms:	α -Rbx1, ATRBX1, HRT1, RBX1, REGULATOR OF CULLINS-1, RING-BOX 1, ROC1
Immunogen:	KLH-conjugated synthetic peptide (14 aa from C terminal section) derived from <i>Arabidopsis thaliana</i> α -Rbx1 (AT5G20570).
Form:	Lyophilized
Quantity:	150 μ g
Purification:	Serum Peptide affinity form antibody available upon request at info@phytoab.com .
Reconstitution:	Reconstitution with 150 μ l of sterile water. "Note: please spin tube briefly prior to opening it to avoid any losses that might occur from lyophilized material adhering to the cap or sides of the tube".
Stability & Storage:	Use a manual defrost freezer and avoid repeated freeze-thaw cycles. 12 months from date of receipt, -20 to -70°C as supplied. 6 months, -20 to -70°C under sterile conditions after reconstitution. 1 month, 2 to 8°C under sterile conditions after reconstitution.
Shipping:	The product is shipped at 4°C. Upon receipt, store it immediately at the temperature recommended above.

Application Information

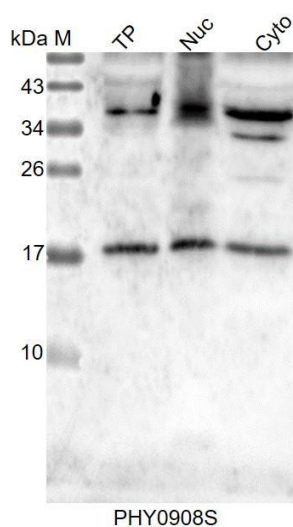
Recommended Dilution:	Western Blot (1:1000-1:5000) Note: Optimal dilutions/concentrations should be determined by the end user.
Expected / apparent MW:	16 / 18 kDa
Confirmed Reactivity:	<i>Arabidopsis thaliana</i>

Research Use Only

Predicted Reactivity:

Among species analyzed, the sequence of the synthetic peptide used for immunization is 100% homologues with the sequence in *Solanum tuberosum*, *Brassica rapa*, *Oryza sativa Indica Group*, *Panicum virgatum*, *Glycine max*, *Nicotiana tabacum*, *Triticum aestivum*, *Brassica napus*, *Oryza sativa Japonica Group*, *Setaria viridis*, *Sorghum bicolor*, *Zea mays*, *Vitis vinifera*, *Hordeum vulgare*, *Spinacia oleracea*, *Gossypium raimondii*, *Solanum lycopersicum*, *Medicago truncatula*, *Cucumis sativus*, *Populus trichocarpa*, and 80-99% homologues with the sequence in *Physcomitrium patens*. The sequence of the synthetic peptide used for immunization is 86% homologues with the sequence in RBX1B (AT3G42830). For more species homologues information, please contact tech support at tech@phytoab.com.

Application Example



TP: 20 µg total chloroplast protein from *Arabidopsis thaliana*.

Nuc: 7.5 µg nuclear protein from *Arabidopsis thaliana*.

Cyto: 30 µg cytosolic protein from *Arabidopsis thaliana*.

Electrophoresis: 15% SDS-PAGE

Transfer: blotting to NC (nitrocellulose) membrane for 1 h.

Blocking: 5% skim milk at RT or 4°C for 1 h.

Primary antibody: 1:5000 dilution overnight at 4°C.

Secondary antibody: 1:10000 dilution using Goat Anti-Rabbit IgG &L (HRP) (Cat# PHY6000).

Detection: using chemiluminescence substrate and image were captured with CCD camera.