

Anti-PsaF subunit of Photosystem I antibody

Catalog: PHY0120A

Product Information

Description:	Rabbit polyclonal antibody
Background:	PsaF encodes subunit F of photosystem I which participates in efficiency of electron transfer from plastocyanin to P700 (or cytochrome c553 in algae and cyanobacteria).
Synonyms:	PsaF, PHOTOSYSTEM I SUBUNIT F, PSAF
Immunogen:	KLH-conjugated synthetic peptide (15 aa from Central section) derived from <i>Arabidopsis thaliana</i> PsaF (AT1G31330).
Form:	Lyophilized
Quantity:	150 µg
Purification:	Immunogen affinity purified
Reconstitution:	Reconstitution with 150 µl of 0.01 M sterile PBS. "Note: please spin tube briefly prior to opening it to avoid any losses that might occur from lyophilized material adhering to the cap or sides of the tube".
Stability & Storage:	Use a manual defrost freezer and avoid repeated freeze-thaw cycles. 12 months from date of receipt, -20 to -70°C as supplied. 6 months, -20 to -70°C under sterile conditions after reconstitution. 1 month, 2 to 8°C under sterile conditions after reconstitution.
Shipping:	The product is shipped at 4°C. Upon receipt, store it immediately at the temperature recommended above.

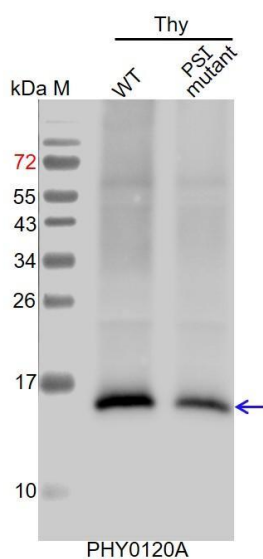
Application Information

Recommended Dilution:	Western Blot (1:1000-1:2000) Note: Optimal dilutions/concentrations should be determined by the end user.
Expected / apparent MW:	24 kDa
Confirmed Reactivity:	<i>Arabidopsis thaliana</i>
Predicted Reactivity:	Among species analyzed, the sequence of the synthetic peptide used for immunization is 100% homologues with the sequence in <i>Gossypium raimondii</i> , <i>Brassica rapa</i> , <i>Brassica napus</i> , and 80-99%

Research Use Only

homologues with the sequence in *Spinacia oleracea*, *Oryza sativa*, *Panicum virgatum*, *Zea mays*, *Triticum aestivum*, *Setaria viridis*, *Hordeum vulgare*, *Sorghum bicolor*, *Solanum tuberosum*, *Nicotiana tabacum*, *Solanum lycopersicum*, *Populus trichocarpa*, *Medicago truncatula*, *Glycine max*, *Physcomitrium patens*, *Cucumis sativus*.
For more species homologues information, please contact tech support at tech@phytoab.com.

Application Example



Thy-WT: thylakoid membrane protein from WT of *Arabidopsis thaliana* leaf containing 0.5 µg of chlorophyll.

Thy-PS I mutant: thylakoid membrane protein from an Arabidopsis mutant with low accumulation of PS I containing 0.5 µg of chlorophyll.

Electrophoresis: 15% SDS-PAGE

Transfer: blotting to NC (nitrocellulose) membrane for 1 h.

Blocking: 5% skim milk at RT or 4°C for 1 h.

Primary antibody: 1:2000 dilution overnight at 4°C.

Secondary antibody: 1:10000 dilution using Goat Anti-Rabbit IgG H&L(HRP) (Cat# PHY6000).

Detection: using chemiluminescence substrate and image were captured with CCD camera.