

Anti-50S ribosomal protein L18p antibody

Catalog: PHY0414S

Product Information

| | |
|---------------------------------|---|
| Description: | Rabbit polyclonal antibody |
| Background: | RP- L18p is a member of ribosomal L18p/L5e family protein, it binds 5S rRNA, and forms part of the central protuberance of the 50S subunit. |
| Synonyms: | RP-L18p, EMB3105, EMBRYO DEFECTIVE 3105 |
| Immunogen: | KLH-conjugated synthetic peptide (15 aa from central section) derived from <i>Arabidopsis thaliana</i> RP-L18p (AT1G48350). |
| Form: | Lyophilized |
| Quantity: | 150 µg |
| Purification: | Serum |
| | Peptide affinity form antibody available upon request at info@phytoab.com . |
| Reconstitution: | Reconstitution with 150 µl of sterile water. "Note: please spin tube briefly prior to opening it to avoid any losses that might occur from lyophilized material adhering to the cap or sides of the tube". |
| Stability & Storage: | Use a manual defrost freezer and avoid repeated freeze-thaw cycles. 12 months from date of receipt, -20 to -70°C as supplied. 6 months, -20 to -70°C under sterile conditions after reconstitution. 1 month, 2 to 8°C under sterile conditions after reconstitution. |
| Shipping: | The product is shipped at 4°C. Upon receipt, store it immediately at the temperature recommended above. |

Application Information

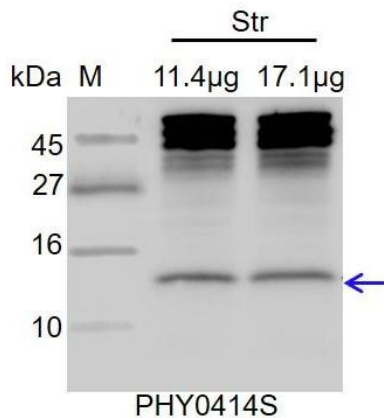
| | |
|--------------------------------|---|
| Recommended Dilution: | Western Blot (1:1000-1:2000) Note: Optimal dilutions/concentrations should be determined by the end user. |
| Expected / apparent MW: | 19 / 14 kDa |
| Confirmed Reactivity: | <i>Arabidopsis thaliana</i> |
| Predicted Reactivity: | Among species analyzed, the sequence of the synthetic peptide used for immunization is 100% homologues with the sequence in <i>Brassica napus</i> , <i>Brassica rapa</i> , and 80-99% homologues with the sequence in |

Research Use Only

Nicotiana tabacum, *Solanum tuberosum*, *Solanum lycopersicum*,
Gossypium raimondii.

For more species homologues information, please contact tech support at tech@phytoab.com.

Application Example



Str: 11.4 µg and 17.1 µg stromal protein from *Arabidopsis thaliana*, respectively.

Electrophoresis: Tricine-SDS-PAGE

Transfer: blotting to NC (nitrocellulose) membrane for 1 h.

Blocking: 5% skim milk at RT or 4°C for 1 h.

Primary antibody: 1:2000 dilution overnight at 4°C.

Secondary antibody: 1:10000 dilution using Goat Anti-Rabbit IgG H&L(HRP) (Cat# PHY6000).

Detection: using chemiluminescence substrate and image were captured with CCD camera.