

Anti-F-box protein GID2, N-terminal antibody

Catalog: PHY0883S

Product Information

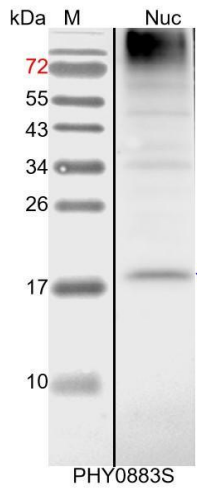
| | |
|---------------------------------|---|
| Description: | Rabbit polyclonal antibody |
| Background: | SLY1 is involved in GA signaling. It regulates seed germination. It is the component of E3 ubiquitin complex. It interacts with DELLA proteins. |
| Synonyms: | SLY1, GAI AN REVERTANT 2, GAR2, SLEEPY1 |
| Immunogen: | KLH-conjugated synthetic peptide (15 aa from N terminal section) derived from <i>Arabidopsis thaliana</i> SLY1 (AT4G24210). |
| Form: | Lyophilized |
| Quantity: | 150 µg |
| Purification: | Serum Peptide affinity form antibody available upon request at info@phytoab.com . |
| Reconstitution: | Reconstitution with 150 µl of sterile water. "Note: please spin tube briefly prior to opening it to avoid any losses that might occur from lyophilized material adhering to the cap or sides of the tube". |
| Stability & Storage: | Use a manual defrost freezer and avoid repeated freeze-thaw cycles. 12 months from date of receipt, -20 to -70°C as supplied. 6 months, -20 to -70°C under sterile conditions after reconstitution. 1 month, 2 to 8°C under sterile conditions after reconstitution. |
| Shipping: | The product is shipped at 4°C. Upon receipt, store it immediately at the temperature recommended above. |

Application Information

| | |
|--------------------------------|--|
| Recommended Dilution: | Western Blot (1:1000-1:5000) Note: Optimal dilutions/concentrations should be determined by the end user. |
| Expected / apparent MW: | 17 / 18 kDa |
| Confirmed Reactivity: | <i>Arabidopsis thaliana</i> |
| Predicted Reactivity: | For more species homologues information, please contact tech support at tech@phytoab.com . |

Research Use Only

Application Example



Nuc: 4 μ g nuclear protein from *Arabidopsis thaliana*.

Electrophoresis: 15% SDS-PAGE

Transfer: blotting to NC (nitrocellulose) membrane for 1 h.

Blocking: 5% skim milk at RT or 4°C for 1 h.

Primary antibody: 1:5000 dilution overnight at 4°C.

Secondary antibody: 1:10000 dilution using Goat Anti-Rabbit IgG &L (HRP) (Cat# PHY6000).

Detection: using chemiluminescence substrate and image were captured with CCD camera.