

Anti-Rieske iron-sulfur protein of Cyt b6/f complex antibody

Catalog: PHY0163A

Product Information

Description:	Rabbit polyclonal antibody
Background:	The 'Rieske protein' PetC is one of the key subunits of the cytochrome b (6)f complex. Its Rieske-type [2Fe-2S] cluster participates in the photosynthetic electron-transport chain.
Synonyms:	PetC, PGR1, PHOTOSYNTHETIC ELECTRON TRANSFER C, PROTON GRADIENT REGULATION 1
Immunogen:	KLH-conjugated synthetic peptide (15 aa from central section) derived from <i>Arabidopsis thaliana</i> PetC (AT4G03280).
Form:	Lyophilized
Quantity:	150 µg
Purification:	Immunogen affinity purified
Reconstitution:	Reconstitution with 150 µl of 0.01 M sterile PBS. "Note: please spin tube briefly prior to opening it to avoid any losses that might occur from lyophilized material adhering to the cap or sides of the tube".
Stability & Storage:	Use a manual defrost freezer and avoid repeated freeze-thaw cycles. 12 months from date of receipt, -20 to -70°C as supplied. 6 months, -20 to -70°C under sterile conditions after reconstitution. 1 month, 2 to 8°C under sterile conditions after reconstitution.
Shipping:	The product is shipped at 4°C. Upon receipt, store it immediately at the temperature recommended above.

Application Information

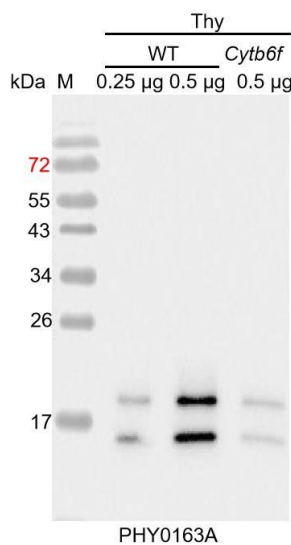
Recommended Dilution:	Western Blot (1:1000-1:2000) Note: Optimal dilutions/concentrations should be determined by the end user.
Expected / apparent MW:	24 kDa
Confirmed Reactivity:	<i>Arabidopsis thaliana</i>
Predicted Reactivity:	Among species analyzed, the sequence of the synthetic peptide used

Research Use Only

for immunization is 100% homologues with the sequence in *Brassica rapa*, *Brassica napus*, *Vitis vinifera*, *Glycine max*, *Spinacia oleracea*, *Medicago truncatula*, *Gossypium raimondii*, *Cucumis sativus*, *Oryza sativa Japonica Group*, and 80-99% homologues with the sequence in *Nicotiana tabacum*, *Populus trichocarpa*, *Panicum virgatum*, *Setaria viridis*, *Physcomitrium patens*, *Solanum lycopersicum*, *Solanum tuberosum*, *Zea mays*, *Sorghum bicolor*, *Triticum aestivum*, *Hordeum vulgare subsp. vulgare*, *Panicum virgatum*, *Synechococcus elongatus* PCC 7942, *Chlamydomonas reinhardtii*.

For more species homologues information, please contact tech support at tech@phytoab.com.

Application Example



Thy-WT: thylakoid membrane protein from WT of *Arabidopsis thaliana* containing 0.25 µg and 0.5 µg of chlorophyll, respectively.

Thy-Cytb6f: thylakoid membrane protein from Arabidopsis mutant with low accumulation of Cyt b6f complex containing 0.5 µg of chlorophyll.

Electrophoresis: 15% SDS -PAGE

Transfer: blotting to NC (nitrocellulose) membrane for 1 h.

Blocking: 5% skim milk at RT or 4°C for 1 h.

Primary antibody: 1:1000 dilution overnight at 4°C.

Secondary antibody: 1:10000 dilution using Goat Anti-Rabbit IgG H&L(HRP) (Cat# PHY6000).

Detection: using chemiluminescence substrate and image were captured with CCD camera.