

Anti-Cytochrome c6, chloroplastic antibody

Catalog: PHY1354S

Product Information

Description:	Rabbit polyclonal antibody
Background:	Cytochrome c(6A) is a eukaryotic member of the Class I cytochrome c family possessing a high structural homology with photosynthetic cytochrome c(6) from cyanobacteria, but structurally and functionally distinct through the presence of a disulfide bond and a heme mid-point redox potential of +71mV (vs normal hydrogen electrode).
Synonyms:	PetJ, Cytochrome c-552, Atc6, Cytochrome c-553, Cytochrome c553, Soluble cytochrome f, CYTC6A, CYTOCHROME C6A
Immunogen:	KLH-conjugated synthetic peptide (15 aa from C terminal section) derived from <i>Arabidopsis thaliana</i> PetJ (AT5G45040).
Form:	Lyophilized
Quantity:	150 µg
Purification:	Serum Peptide affinity form antibody available upon request at info@phytoab.com .
Reconstitution:	Reconstitution with 150 µl of sterile water. "Note: please spin tube briefly prior to opening it to avoid any losses that might occur from lyophilized material adhering to the cap or sides of the tube".
Stability & Storage:	Use a manual defrost freezer and avoid repeated freeze-thaw cycles. 12 months from date of receipt, -20 to -70°C as supplied. 6 months, -20 to -70°C under sterile conditions after reconstitution. 1 month, 2 to 8°C under sterile conditions after reconstitution.
Shipping:	The product is shipped at 4°C. Upon receipt, store it immediately at the temperature recommended above.

Application Information

Recommended Dilution:	Western Blot (1:1000-1:2000) Note: Optimal dilutions/concentrations should be determined by the end user.
Expected / apparent MW:	19 / 10 kDa

Research Use Only

Confirmed Reactivity:

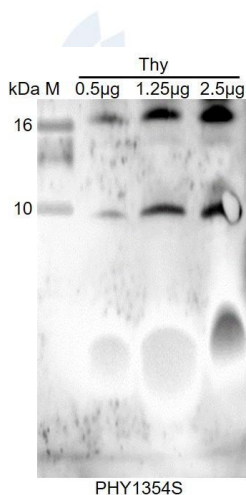
Arabidopsis thaliana

Predicted Reactivity:

Among species analyzed, the sequence of the synthetic peptide used for immunization is 100% homologues with the sequence in *Populus trichocarpa*, *Brassica napus*, *Brassica rapa*, and 80-99% homologues with the sequence in *Nicotiana tabacum*, *Solanum lycopersicum*, *Spinacia oleracea*, *Solanum tuberosum*, *Cucumis sativus*, *Vitis vinifera*, *Triticum aestivum*, *Hordeum vulgare subsp. vulgare*, *Gossypium raimondii*, *Panicum virgatum*, *Sorghum bicolor*, *Oryza sativa Japonica Group*, *Setaria viridis*, *Zea mays*, *Glycine max*, *Medicago truncatula*, *Physcomitrium patens*.

For more species homologues information, please contact tech support at tech@phytoab.com.

Application Example



Thy: thylakoid membrane protein of *Arabidopsis thaliana* containing 0.5 µg, 1.25 µg, and 2.5 µg of chlorophyll, respectively.

Electrophoresis: Tricine-SDS-PAGE

Transfer: blotting to NC (nitrocellulose) membrane for 1 h.

Blocking: 5% skim milk at RT or 4°C for 1 h.

Primary antibody: 1:1000 dilution overnight at 4°C.

Secondary antibody: 1:10000 dilution using Goat Anti-Rabbit IgG H&L (HRP) (Cat# PHY6000).

Detection: using chemiluminescence substrate and image were captured with CCD camera.