

Anti-UDP-glucose pyrophosphorylase antibody

Catalog: PHY2552S

Product Information

Description:	Rabbit polyclonal antibody
Background:	UDP-glucose pyrophosphorylase (UGPase) is an ubiquitous enzyme found in plants, animals and bacteria, and produces UDP-glucose which is the major glycosyl donor for polysaccharides in all organisms (e.g. needed for sucrose synthesis, but also for cellulose and callose formation, and as a precursor to other nucleotide-sugars).
Synonyms:	UGPase
Immunogen:	KLH-conjugated synthetic peptide (18 aa from Central section) derived from <i>Arabidopsis thaliana</i> UGP1 (AT3G03250) and UGP2 (AT5G17310).
Form:	Lyophilized
Quantity:	150 µg
Purification:	Serum Peptide affinity form antibody available upon request at info@phytoab.com .
Reconstitution:	Reconstitution with 150µl of sterile water. "Note: please spin tube briefly prior to opening it to avoid any losses that might occur from lyophilized material adhering to the cap or sides of the tube".
Stability & Storage:	Use a manual defrost freezer and avoid repeated freeze-thaw cycles. 12 months from date of receipt, -20 to -70°C as supplied. 6 months, -20 to -70°C under sterile conditions after reconstitution. 1 month, 2 to 8°C under sterile conditions after reconstitution.
Shipping:	The product is shipped at 4°C. Upon receipt, store it immediately at the temperature recommended above.

Application Information

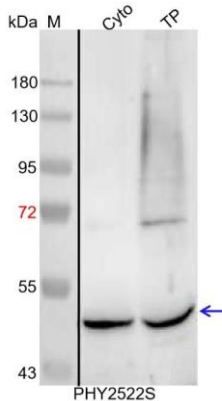
Recommended Dilution:	Western Blot (1:1000-1:2000) Note: Optimal dilutions/concentrations should be determined by the end user.
Expected / apparent MW:	52 / 50 kDa
Confirmed Reactivity:	<i>Arabidopsis thaliana</i>

Research Use Only

Predicted Reactivity:

Among species analyzed, the sequence of the synthetic peptide used for immunization is 100% homologues with the sequence in *Brassica napus*, *Brassica rapa*, *Panicum virgatum*, *Zea mays*, *Gossypium raimondii*, *Solanum tuberosum*, *Solanum lycopersicum*, *Sorghum bicolor*, *Nicotiana tabacum*, *Cucumis sativus*, *Physcomitrium patens*, *Triticum aestivum*, *Glycine max*, *Oryza sativa*, *Vitis vinifera*.
For more species homologues information, please contact tech support at tech@phytoab.com.

Application Example



Cyto: 24 µg cytosolic protein from *Arabidopsis thaliana*.

TP: 30 µg total protein from *Arabidopsis thaliana*.

Electrophoresis: 15% SDS-PAGE

Transfer: blotting to NC (nitrocellulose) membrane for 1 h.

Blocking: 5% skim milk at RT or 4°C for 1 h.

Primary antibody: 1:2000 dilution overnight at 4°C.

Secondary antibody: 1:10000 dilution using Goat Anti-Rabbit IgG H&L (HRP) (Cat# PHY6000)

Detection: using chemiluminescence substrate and image were captured with CCD camera.