

Anti-NADH dehydrogenase [ubiquinone] flavoprotein 1, mitochondrial, N-terminal antibody

Catalog: PHY1407S

Product Information

Description:	Rabbit polyclonal antibody
Background:	Complex I is the largest protein complex of the oxidative phosphorylation system in mitochondrial and it catalyzes NADH-quinone oxidoreduction. Complex I represents the main entrance site for electrons into the respiratory electron transfer chain. In Arabidopsis, Complex I have at least 49 subunits and 51 kD (AT5G08530) is one of the subunit.
Synonyms:	AT5G08530, 51 KDA SUBUNIT OF COMPLEX I, CI51, NDUFV1
Immunogen:	KLH-conjugated synthetic peptide (15 aa from N terminal section) derived from <i>Arabidopsis thaliana</i> AT5G08530.
Form:	Lyophilized
Quantity:	150 µg
Purification:	Serum Peptide affinity form antibody available upon request at info@phytoab.com .
Reconstitution:	Reconstitution with 150 µl of sterile water. "Note: please spin tube briefly prior to opening it to avoid any losses that might occur from lyophilized material adhering to the cap or sides of the tube".
Stability & Storage:	Use a manual defrost freezer and avoid repeated freeze-thaw cycles. 12 months from date of receipt, -20 to -70°C as supplied. 6 months, -20 to -70°C under sterile conditions after reconstitution. 1 month, 2 to 8°C under sterile conditions after reconstitution.
Shipping:	The product is shipped at 4°C. Upon receipt, store it immediately at the temperature recommended above.

Application Information

Recommended Dilution:	Western Blot (1:1000-1:2000) Note: Optimal dilutions/concentrations should be determined by the end user.
Expected / apparent MW:	53 kDa

Research Use Only

Confirmed Reactivity:

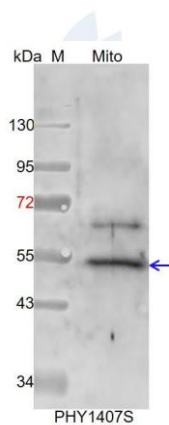
Arabidopsis thaliana

Predicted Reactivity:

Among species analyzed, the sequence of the synthetic peptide used for immunization is 100% homologues with the sequence in *Glycine max*, *Oryza sativa*, *Panicum virgatum*, *Setaria viridis*, *Spinacia oleracea*, *Brassica napus*, *Brassica rapa*, *Cucumis sativus*, *Medicago truncatula*, and 80-99% homologues with the sequence in *Hordeum vulgare subsp. vulgare*, *Zea mays*, *Triticum aestivum*, *Solanum tuberosum*, *Sorghum bicolor*, *Gossypium raimondii*, *Nicotiana tabacum*, *Solanum lycopersicum*, *Populus trichocarpa*, *Physcomitrium patens*, *Vitis vinifera*.

For more species homologues information, please contact tech support at tech@phytoab.com.

Application Example



Mito: 10 µg mitochondria protein from *Arabidopsis thaliana*.

Electrophoresis: 15% SDS-PAGE

Transfer: blotting to NC (nitrocellulose) membrane for 1 h.

Blocking: 5% skim milk at RT or 4°C for 1 h.

Primary antibody: 1:1000 dilution overnight at 4°C.

Secondary antibody: 1:10000 dilution using Goat Anti-Rabbit IgG H&L (HRP) (Cat# PHY6000).

Detection: using chemiluminescence substrate and image were captured with CCD camera.