

# Anti-Protein CURVATURE THYLAKOID 1A, chloroplastic antibody

Catalog: PHY1446S

## Product Information

<b>Description:</b>	Rabbit polyclonal antibody
<b>Background:</b>	The CURT1 protein family in Arabidopsis were grouped into A (AT4G01150), B (AT2G46820), C (AT1G52220) and D (AT4G38100). Arabidopsis CURT1A proteins oligomerize and induce tubulation of liposomes, implying that CURT1 proteins suffice to induce membrane curvature.
<b>Synonyms:</b>	CURT1A, CURVATURE THYLAKOID 1A
<b>Immunogen:</b>	KLH-conjugated synthetic peptide (28 aa from C terminal section) derived from <i>Arabidopsis thaliana</i> CURT1A (AT4G01150).
<b>Form:</b>	Lyophilized
<b>Quantity:</b>	150 µg
<b>Purification:</b>	Serum Peptide affinity form antibody available upon request at <a href="mailto:info@phytoab.com">info@phytoab.com</a> .
<b>Reconstitution:</b>	Reconstitution with 150 µl of sterile water. "Note: please spin tube briefly prior to opening it to avoid any losses that might occur from lyophilized material adhering to the cap or sides of the tube".
<b>Stability &amp; Storage:</b>	Use a manual defrost freezer and avoid repeated freeze-thaw cycles. 12 months from date of receipt, -20 to -70°C as supplied. 6 months, -20 to -70°C under sterile conditions after reconstitution. 1 month, 2 to 8°C under sterile conditions after reconstitution.
<b>Shipping:</b>	The product is shipped at 4°C. Upon receipt, store it immediately at the temperature recommended above.

## Application Information

<b>Recommended Dilution:</b>	Western Blot (1:1000-1:2000) Note: Optimal dilutions/concentrations should be determined by the end user.
<b>Expected / apparent MW:</b>	18 / 11 kDa
<b>Confirmed Reactivity:</b>	Coming soon

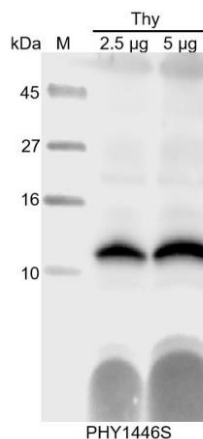
Research Use Only

### Predicted Reactivity:

Among species analyzed, the sequence of the synthetic peptide used for immunization is 80-99% homologues with the sequence in *Brassica rapa*, *Brassica napus*, *Medicago truncatula*.

For more species homologues information, please contact tech support at [tech@phytoab.com](mailto:tech@phytoab.com).

### Application Example



Thy: thylakoid membrane protein from *Arabidopsis thaliana* containing 2.5 µg, and 5 µg of chlorophyll, respectively.

**Electrophoresis:** Tricine-SDS-PAGE

**Transfer:** blotting to NC (nitrocellulose) membrane for 1 h.

**Blocking:** 5% skim milk at RT or 4°C for 1 h.

**Primary antibody:** 1:1000 dilution overnight at 4°C.

**Secondary antibody:** 1:10000 dilution using Goat Anti-Rabbit IgG H&L (HRP) (Cat# PHY6000).

**Detection:** using chemiluminescence substrate and image were captured with CCD camera.