

Anti-Peroxiredoxin-2E, chloroplastic, C-terminal antibody

Catalog: PHY2108S

Product Information

Description:	Rabbit polyclonal antibody
Background:	Peroxiredoxin II E (PrxII E) is a thiol-specific peroxidase that catalyzes the reduction of hydrogen peroxide and organic hydroperoxides to water and alcohols, respectively. PrxII E plays a role in cell protection against oxidative stress by detoxifying peroxides. In <i>Arabidopsis thaliana</i> , PRXII E is expressed mostly in reproductive tissues (buds, siliques, seeds).
Synonyms:	PRXII E, PEROXIREDOXIN-II-E
Immunogen:	KLH-conjugated synthetic peptide (16 aa from C terminal section) derived from <i>Arabidopsis thaliana</i> PRXII E (AT3G52960).
Form:	Lyophilized
Quantity:	150 µg
Purification:	Serum Peptide affinity form antibody available upon request at info@phytoab.com .
Reconstitution:	Reconstitution with 150 µl of sterile water. "Note: please spin tube briefly prior to opening it to avoid any losses that might occur from lyophilized material adhering to the cap or sides of the tube".
Stability & Storage:	Use a manual defrost freezer and avoid repeated freeze-thaw cycles. 12 months from date of receipt, -20 to -70°C as supplied. 6 months, -20 to -70°C under sterile conditions after reconstitution. 1 month, 2 to 8°C under sterile conditions after reconstitution.
Shipping:	The product is shipped at 4°C. Upon receipt, store it immediately at the temperature recommended above.

Application Information

Recommended Dilution:	Western Blot (1:1000-1:2000) Note: Optimal dilutions/concentrations should be determined by the end user.
Expected / apparent MW:	25 / 17 kDa

Research Use Only

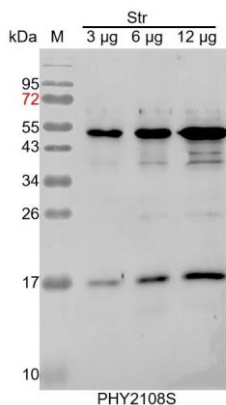
Confirmed Reactivity:

Arabidopsis thaliana

Predicted Reactivity:

Among species analyzed, the sequence of the synthetic peptide used for immunization is 100% homologues with the sequence in *Hordeum vulgare*, *Brassica napus*, *Panicum virgatum*, *Brassica rapa*, *Triticum aestivum*, *Setaria viridis*, and 80-99% homologues with the sequence in *Zea mays*, *Sorghum bicolor*, *Oryza sativa*, *Spinacia oleracea*, *Populus trichocarpa*, *Chlamydomonas reinhardtii*, *Cucumis sativus*. For more species homologues information, please contact tech support at tech@phytoab.com.

Application Example



Str: 3 µg, 6 µg and 12 µg total protein from *Arabidopsis thaliana*, respectively.

Electrophoresis: 15% SDS-PAGE

Transfer: blotting to NC (nitrocellulose) membrane for 1 h.

Blocking: 5% skim milk at RT or 4°C for 1 h.

Primary antibody: 1:1000 dilution overnight at 4°C.

Secondary antibody: 1:10000 dilution using Goat Anti-Rabbit IgG H&L (HRP) (Cat# PHY6000).

Detection: using chemiluminescence substrate and image were captured with CCD camera.