

Anti-Plant alternative oxidase 1/2 antibody

Catalog: PHY2212A

Product Information

Description:	Rabbit polyclonal antibody
Background:	<p>The cyanide-insensitive alternative oxidase (AOX) is a non-proton-pumping ubiquinol oxidase that catalyzes the reduction of oxygen to water and is posttranslationally regulated by redox mechanisms and 2-oxo acids.</p> <p>Arabidopsis possesses five AOX isoforms, and are AOX1A (AT3G22370), AOX1B (AT3G22360), AOX1C (AT3G27620), AOX1D (AT1G32350) and AOX2 (AT5G64210).</p>
Synonyms:	AOX1/2
Immunogen:	<p>KLH-conjugated synthetic peptide (19 aa from C terminal section) derived from <i>Arabidopsis thaliana</i> AOX1A (AT3G22370), AOX1B (AT3G22360), AOX1C (AT3G27620), AOX1D (AT1G32350) and AOX2 (AT5G64210).</p>
Form:	Lyophilized
Quantity:	150 µg
Purification:	Immunogen affinity purified
Reconstitution:	<p>Reconstitution with 150 µl of 0.01 M sterile PBS.</p> <p>"Note: please spin tube briefly prior to opening it to avoid any losses that might occur from lyophilized material adhering to the cap or sides of the tube".</p>
Stability & Storage:	<p>Use a manual defrost freezer and avoid repeated freeze-thaw cycles.</p> <p>12 months from date of receipt, -20 to -70°C as supplied.</p> <p>6 months, -20 to -70°C under sterile conditions after reconstitution.</p> <p>1 month, 2 to 8°C under sterile conditions after reconstitution.</p>
Shipping:	The product is shipped at 4°C. Upon receipt, store it immediately at the temperature recommended above.

Application Information

Recommended Dilution:	<p>Western Blot (1:1000-1:2000)</p> <p>Note: Optimal dilutions/concentrations should be determined by the end user.</p>
Expected / apparent MW:	<p>40 kDa (AT5G64210, AT3G22370), 38 kDa (AT3G27620), 36 kDa (AT1G32350), 37 kDa (AT3G22360)</p>

Research Use Only

Confirmed Reactivity:

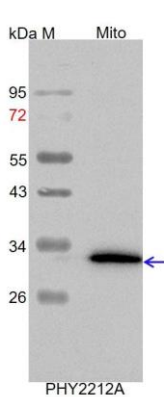
Arabidopsis thaliana

Predicted Reactivity:

Among species analyzed, the sequence of the synthetic peptide used for immunization is 100% homologues with the sequence in *Solanum lycopersicum*, *Solanum tuberosum*, *Physcomitrium patens*, *Nicotiana tabacum*, *Brassica rapa*, *Brassica napus*, *Spinacia oleracea*, *Populus trichocarpa*, *Gossypium raimondii*, *Medicago truncatula*, *Vitis vinifera*, *Glycine max*, and 80-99% homologues with the sequence in *Oryza sativa*, *Triticum aestivum*, *Zea mays*, *Hordeum vulgare*.

For more species homologues information, please contact tech support at tech@phytoab.com.

Application Example



Mito: 7.5 µg mitochondria protein from *Arabidopsis thaliana*.

Electrophoresis: 15% SDS-PAGE

Transfer: blotting to NC (nitrocellulose) membrane for 1 h.

Blocking: 5% skim milk at RT or 4°C for 1 h.

Primary antibody: 1:2000 dilution overnight at 4°C.

Secondary antibody: 1:10000 dilution using Goat Anti-Rabbit IgG H&L(HRP) (Cat# PHY6000).

Detection: using chemiluminescence substrate and image were captured with CCD camera.