

Anti-Aquaporin TIP1-1, N-terminal antibody

Catalog: PHY1482S

Product Information

Description:	Rabbit polyclonal antibody
Background:	TIP1-1 is a tonoplast intrinsic protein, which functions as water channel. It has also been shown to be able to facilitate the transport of urea and hydrogen peroxide. Highly expressed in vascular tissues of the root, stem, cauline leaves and flowers but not in the apical meristems.
Synonyms:	TIP1-1, GAMMA TONOPLAST INTRINSIC PROTEIN, GAMMA TONOPLAST INTRINSIC PROTEIN 1, GAMMA-TIP, GAMMA-TIP1, TIP1;1, TONOPLAST INTRINSIC PROTEIN 1;1
Immunogen:	KLH-conjugated synthetic peptide (20 aa from N terminal section) derived from <i>Arabidopsis thaliana</i> TIP1-1 (AT2G36830).
Form:	Lyophilized
Quantity:	150 µg
Purification:	Serum Peptide affinity form antibody available upon request at info@phytoab.com .
Reconstitution:	Reconstitution with 150 µl of sterile water. "Note: please spin tube briefly prior to opening it to avoid any losses that might occur from lyophilized material adhering to the cap or sides of the tube".
Stability & Storage:	Use a manual defrost freezer and avoid repeated freeze-thaw cycles. 12 months from date of receipt, -20 to -70°C as supplied. 6 months, -20 to -70°C under sterile conditions after reconstitution. 1 month, 2 to 8°C under sterile conditions after reconstitution.
Shipping:	The product is shipped at 4°C. Upon receipt, store it immediately at the temperature recommended above.

Application Information

Recommended Dilution:	Western Blot (1:1000-1:2000) Note: Optimal dilutions/concentrations should be determined by the end user.
Expected / apparent MW:	26 / 23 kDa

Research Use Only

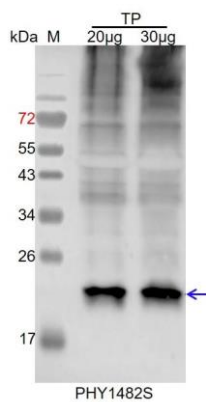
Confirmed Reactivity:

Arabidopsis thaliana

Predicted Reactivity:

Among species analyzed, the sequence of the synthetic peptide used for immunization is 80-99% homologues with the sequence in *Brassica napus*, *Vitis vinifera*, *Cucumis sativus*, *Gossypium raimondii*, *Brassica rapa*, *Glycine max*, *Nicotiana tabacum*. For more species homologues information, please contact tech support at tech@phytoab.com.

Application Example



TP: 20 µg and 30 µg total protein from *Arabidopsis thaliana*.

Electrophoresis: 15% SDS-PAGE

Transfer: blotting to NC (nitrocellulose) membrane for 1 h.

Blocking: 5% skim milk at RT or 4°C for 1 h.

Primary antibody: 1:1000 dilution overnight at 4°C.

Secondary antibody: 1:10000 dilution using Goat Anti-Rabbit IgG H&L (HRP) (Cat# PHY6000).

Detection: using chemiluminescence substrate and image were captured with CCD camera.