

Anti-Ethylene receptor 1 antibody

Catalog: PHY1705S

Product Information

Description:	Rabbit polyclonal antibody
Background:	Ethylene is a gaseous plant hormone perceived by a family of receptors in <i>Arabidopsis</i> (<i>Arabidopsis thaliana</i>) including ETHYLENE RESPONSE1 (ETR1) (AT1G66340) and ETR2 (AT3G23150). Ethylene is perceived by membrane - bound ethylene receptors, and among the homologous receptors in <i>Arabidopsis</i> , the ETR1 ethylene receptor plays a major role.
Synonyms:	ETR1, ATETR1, EIN1, ETHYLENE INSENSITIVE 1, ETHYLENE RESPONSE, ETHYLENE RESPONSE 1, ETR,
Immunogen:	Recombinant protein of ETR1 (400-738 aa) derived from <i>Arabidopsis thaliana</i> AT1G66340.
Form:	Lyophilized
Quantity:	150 µg
Purification:	Serum
Reconstitution:	Reconstitution with 150 µl of sterile water. "Note: please spin tube briefly prior to opening it to avoid any losses that might occur from lyophilized material adhering to the cap or sides of the tube".
Stability & Storage:	Use a manual defrost freezer and avoid repeated freeze-thaw cycles. 12 months from date of receipt, -20 to -70°C as supplied. 6 months, -20 to -70°C under sterile conditions after reconstitution. 1 month, 2 to 8°C under sterile conditions after reconstitution.
Shipping:	The product is shipped at 4°C. Upon receipt, store it immediately at the temperature recommended above.

Application Information

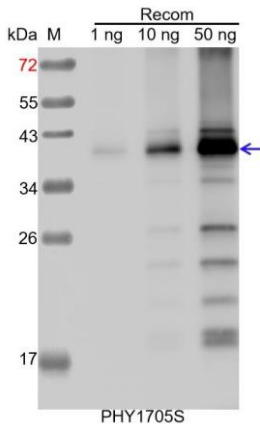
Recommended Dilution:	Western Blot (1:1000-1:5000) Note: Optimal dilutions/concentrations should be determined by the end user.
Expected / apparent MW:	83 kDa (<i>Arabidopsis thaliana</i>), 38 kDa (Recombinant protein)
Confirmed Reactivity:	<i>Arabidopsis thaliana</i>

Research Use Only

Predicted Reactivity:

For more species homologues information, please contact tech support at tech@phytoab.com.

Application Example



Recom: 1 ng, 10 ng and 50 ng recombinant protein containing the peptide for immunization and having a molecular mass of 38 kDa.

Electrophoresis: 15% SDS-PAGE

Transfer: blotting to NC (nitrocellulose) membrane for 1 h.

Blocking: 5% skim milk at RT or 4°C for 1 h.

Primary antibody: 1:1000 dilution overnight at 4°C.

Secondary antibody: 1:10000 dilution using Goat Anti-Rabbit IgG H&L (HRP) (Cat# PHY6000)

Detection: using chemiluminescence substrate and image were captured with CCD camera.