

Anti-Phytochrome interacting factor 3 antibody

Catalog: PHY1607S

Product Information

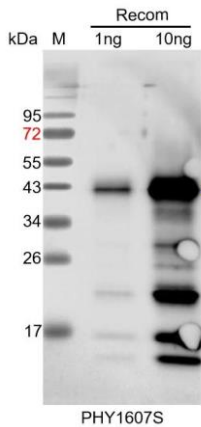
Description:	Rabbit polyclonal antibody
Background:	PHYTOCHROME-INTERACTING FACTOR 3 (PIF3) is a key transcription factor repressing photomorphogenesis. It has been shown to play a pivotal role in mediating plants' responses to various environmental signals.
Synonyms:	PIF3, PAP3, PHOTOCURRENT 1, PHYTOCHROME INTERACTING FACTOR 3, PHYTOCHROME-ASSOCIATED PROTEIN 3, POC1.
Immunogen:	Recombinant protein of PIF3 (48-339 aa) derived from <i>Arabidopsis thaliana</i> AT1G09530.
Form:	Lyophilized
Quantity:	150 µg
Purification:	Serum
Reconstitution:	Reconstitution with 150 µl of sterile water. "Note: please spin tube briefly prior to opening it to avoid any losses that might occur from lyophilized material adhering to the cap or sides of the tube".
Stability & Storage:	Use a manual defrost freezer and avoid repeated freeze-thaw cycles. 12 months from date of receipt, -20 to -70°C as supplied. 6 months, -20 to -70°C under sterile conditions after reconstitution. 1 month, 2 to 8°C under sterile conditions after reconstitution.
Shipping:	The product is shipped at 4°C. Upon receipt, store it immediately at the temperature recommended above.

Application Information

Recommended Dilution:	Western Blot (1:1000-1:2000) Note: Optimal dilutions/concentrations should be determined by the end user.
Expected / apparent MW:	57 kDa (<i>Arabidopsis thaliana</i>), 39 kDa (Recombinant protein)
Confirmed Reactivity:	<i>Arabidopsis thaliana</i>
Predicted Reactivity:	For more species homologues information, please contact tech support at tech@phytoab.com .

Research Use Only

Application Example



Recom: 1 ng and 10 ng recombinant protein containing the peptide for immunization and having a molecular mass of 43 kDa.

Electrophoresis: 15% SDS-PAGE

Transfer: blotting to NC (nitrocellulose) membrane for 1 h.

Blocking: 5% skim milk at RT or 4°C for 1 h.

Primary antibody: 1:1000 dilution overnight at 4°C.

Secondary antibody: 1:10000 dilution using Goat Anti-Rabbit IgG H&L (HRP) (Cat# PHY6000)

Detection: using chemiluminescence substrate and image were captured with CCD camera.